

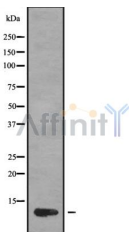
CCL1 Ab

Cat.#: DF9910
Size: 100ul,200ul

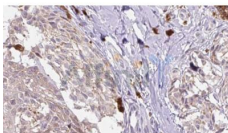
Concn.: 1mg/ml
Source: Rabbit

Mol.Wt.: 11 kDa
Clonality: Polyclonal

Application:	WB 1:1000-3000 IHC 1:200
Reactivity:	Human
Purification:	The antiserum was purified by peptide affinity chromatography using SulfoLink™ Coupling Resin (Thermo Fisher Scientific).
Specificity:	CCL1 Ab detects endogenous levels of total CCL1.
Immunogen:	A synthesized peptide derived from human CCL1.
Uniprot:	P22362
Subcellular Location:	Secreted.
Tissue Specificity:	By phorbol myristate acetate (PMA).
Similarity:	Belongs to the intercrine beta (chemokine CC) family.
Storage Condition and Buffer:	Rabbit IgG in phosphate buffered saline , pH 7.4, 150mM NaCl, 0.02% sodium azide and 50% glycerol.Store at -20 °C.Stable for 12 months from date of receipt.



Western blot analysis of CCL1 using MCF7 whole cell lysates



DF9910 at 1/100 staining Human Melanoma tissue by IHC-P. The sample was formaldehyde fixed and a heat mediated antigen retrieval step in citrate buffer was performed. The sample was then blocked and incubated with the Ab for 1.5 hours at 22°C. An HRP conjugated goat anti-rabbit Ab was used as the secondary.

IMPORTANT: For western blot, incubate membrane with diluted primary Ab in 5% w/v milk , 1X TBS, 0.1% Tween@20 at 4°C with gentle shaking,

overnight.

For Research Use Only. Not for use in diagnostic and therapeutic procedures. Not for resale without express authorization.