

UBQLN2 Ab

Cat.#: DF9980	Concn.: 1mg/ml	Mol.Wt.: 66 kDa
Size: 100ul,200ul	Source: Rabbit	Clonality: Polyclonal

Application: WB 1:1000-3000

Reactivity: Human,Mouse,Rat

Purification: The antiserum was purified by peptide affinity chromatography using SulfoLink™ Coupling Resin (Thermo Fisher Scientific).

Specificity: UBQLN2 Ab detects endogenous levels of total UBQLN2.

Immunogen: A synthesized peptide derived from human UBQLN2.

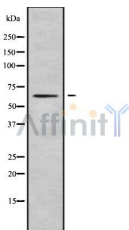
Uniprot: Q9UHD9

Subcellular Location: Cytoplasmic and Nuclear. Note=Where it colocalizes with the proteasome. Associated with fibers in mitotic cells.

Tissue Specificity: Highly expressed in mitotic cells from metaphase to telophase. Expression in non-mitotic cells is very low.

Similarity: The ubiquitin-like domain is essential for its inhibitory effect on GPCR endocytosis. Mediates its association with the subunits of the proteasome.The UBA domain is essential for its association with microtubule-associated protein 1 light chain 3 (MAP1LC3). Mediates its association with ubiquitinated substrates.Dimerization is dependent upon the central region of the protein containing the ST11 domains and is independent of its ubiquitin-like and UBA domains.

Storage Condition and Buffer: Rabbit IgG in phosphate buffered saline , pH 7.4, 150mM NaCl, 0.02% sodium azide and 50% glycerol.Store at -20 °C.Stable for 12 months from date of receipt.



Western blot analysis UBQLN2 using HeLa whole cell lysates

IMPORTANT: For western blot, incubate membrane with diluted primary Ab in 5% w/v milk , 1X TBS, 0.1% Tween@20 at 4°C with gentle shaking,



Affinity Biosciences
website: www.affbiotech.com
order: order@affbiotech.com

overnight.

For Research Use Only. Not for use in diagnostic and therapeutic procedures. Not for resale without express authorization.