

## USP12 Ab

Cat.#: DF9981  
Size: 100ul,200ul

Concn.: 1mg/ml  
Source: Rabbit

Mol.Wt.: 43 kDa  
Clonality: Polyclonal

**Application:** WB 1:1000-3000

**Reactivity:** Human,Mouse,Rat

**Purification:** The antiserum was purified by peptide affinity chromatography using SulfoLink™ Coupling Resin (Thermo Fisher Scientific).

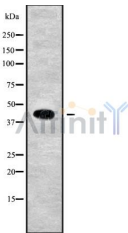
**Specificity:** USP12 Ab detects endogenous levels of total USP12.

**Immunogen:** A synthesized peptide derived from human USP12.

**Uniprot:** O75317

**Similarity:** Belongs to the peptidase C19 family. USP12/USP46 subfamily.

**Storage Condition and Buffer:** Rabbit IgG in phosphate buffered saline , pH 7.4, 150mM NaCl, 0.02% sodium azide and 50% glycerol.Store at -20 °C.Stable for 12 months from date of receipt.



Western blot analysis USP12 using K562 whole cell lysates

**IMPORTANT:** For western blot, incubate membrane with diluted primary Ab in 5% w/v milk , 1X TBS, 0.1% Tween@20 at 4°C with gentle shaking, overnight.

For Research Use Only. Not for use in diagnostic and therapeutic procedures. Not for resale without express authorization.