

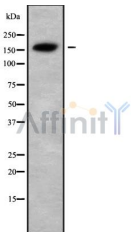
USP6 Ab

Cat.#: DF9995
Size: 100ul,200ul

Concn.: 1mg/ml
Source: Rabbit

Mol.Wt.: 159 kDa
Clonality: Polyclonal

Application:	WB 1:1000-3000
Reactivity:	Human,Mouse,Rat
Purification:	The antiserum was purified by peptide affinity chromatography using SulfoLink™ Coupling Resin (Thermo Fisher Scientific).
Specificity:	USP6 Ab detects endogenous levels of total USP6.
Immunogen:	A synthesized peptide derived from human USP6.
Uniprot:	P35125
Subcellular Location:	Cell membrane. Cytoplasm. Endosome. Localizes to the plasma membrane and to filamentous structures within the cell corresponding to ARF6 regulated tubular endosomes. Activation of RAC1 and CDC42 can direct the relocalization of USP6 to the plasma membrane in a manner that depends on the integrity of the actin cytoskeleton.
Tissue Specificity:	Testis specific. Expressed in various cancer cell lines.
Similarity:	The Rab-GAP TBC domain lacks GTPase activator activity but is necessary for interaction with ARF6.Belongs to the peptidase C19 family.
Storage Condition and Buffer:	Rabbit IgG in phosphate buffered saline , pH 7.4, 150mM NaCl, 0.02% sodium azide and 50% glycerol.Store at -20 °C.Stable for 12 months from date of receipt.



Western blot analysis USP6 using HeLa whole cell lysates

IMPORTANT: For western blot, incubate membrane with diluted primary Ab in 5% w/v milk , 1X TBS, 0.1% Tween@20 at 4°C with gentle shaking, overnight.



Affinity Biosciences

website:www.affbiotech.com

order:order@affbiotech.com

For Research Use Only. Not for use in diagnostic and therapeutic procedures. Not for resale without express authorization.