

PAL231Mu71

Biotin-linked Antibody to Alpha-2-Glycoprotein 1, Zinc Binding (aZGP1)

Organism Species: Mus musculus (Mouse)

Instruction manual

FOR IN VITRO USE AND RESEARCH USE ONLY
NOT FOR USE IN CLINICAL DIAGNOSTIC PROCEDURES

9th Edition (Revised in Jul, 2013)

[PRODUCT INFORMATION]

Immunogen: aZGP1, Mouse

Conjugation: Biotin

Clonality: Polyclonal

Host: Rabbit

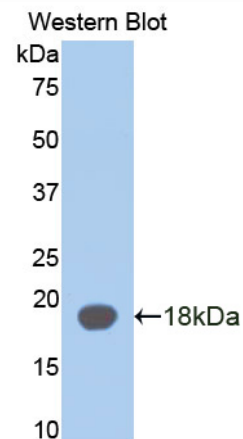
Immunoglobulin Type: IgG

Purification: Affinity Chromatography.

Applications: WB, ICC, IHC-P, IHC-F, ELISA

Concentration: 200µg/mL

UOM: 50µg



Sample: Recombinant aZGP1, Mouse

[IMMUNOGEN INFORMATION]

Immunogen: Recombinant aZGP1 (Glu178~Gln307) expressed in *E.coli*.

Accession No.: RPL231Mu01

Sequence: The target protein is fused with N-terminal His-Tag and its sequence is listed below.

MGHHHHHHSSEF-EEE CPEMLKRYLN YSRSHLDRID PPTVTITSRV IPGGNRIFKC
LAYGFYPQRI SLHWNKANKK LAFEPERGVF PNGNGTYLSW AEVEVSPQDI DPFFCLIDHR
GFSQSLSVQW DRTRKVKDEN NVVAQPQ

[ANTIBODY SPECIFICITY]

The antibody is a rabbit polyclonal antibody raised against aZGP1. It has been selected for its ability to recognize aZGP1 in immunohistochemical staining and western blotting.

[APPLICATIONS]

Western blotting: 1:100-400

Immunocytochemistry in formalin fixed cells: 1:100-500

Immunohistochemistry in formalin fixed frozen section: 1:100-500

Immunohistochemistry in paraffin section: 1:50-200

Enzyme-linked Immunosorbent Assay: 1:100-200

Optimal working dilutions must be determined by end user.

[CONTENTS]

Form & Buffer: Supplied as solution form in PBS, pH7.4, containing 0.02% NaN₃, 50% glycerol.

[STORAGE]

Store at 4°C for frequent use. Stored at -20°C to -80°C in a manual defrost freezer for one year without detectable loss of activity. Avoid repeated freeze-thaw cycles.