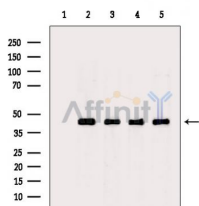


Goat Anti-Rabbit IgG (H+L) HRP

[References\(282\)](#) [Images\(5\)](#)

Cat.#: S0001	Concn.: 1mg/ml	Mol.Wt.:
Size: 100ul,1ml,500ul	Source: Goat	Clonality: Polyclonal

Application:	WB 1:3000~1:10000, IHC 1:200 *The optimal dilutions should be determined by the end user.
Reactivity:	Rabbit
Storage:	HRP-labeled Goat IgG in phosphate buffered saline (without Mg ²⁺ and Ca ²⁺), pH 7.4, 150mM NaCl. Store at -20°?avoid repeated thawing and freezing.
Purification:	affinity purification.
Immunogen:	The antiserum was developed in goat using the Rabbit IgG as the immunogen.
Conjugate:	HRP



Western blot analysis of extracts from various samples, using beta Actin Ab as primary Ab, Goat Anti-Rabbit IgG (H+L) HRP Ab(#S0001) as secondary Ab.
Lane 1: Rat brain, blocked with antigen-specific peptides,
Lane 2: Rat brain,
Lane 3: Mouse brain,
Lane 4: HepG2 cells(LPS 4h treatment),
Lane 5: A549 cells(UV treatment).

IMPORTANT: For western blot, incubate membrane with diluted secondary Ab in 5% w/v milk, 1X TBS, 0.1% Tween@20 at 37°C, 2H.

For Research Use Only. Not for use in diagnostic and therapeutic procedures. Not for resale without express authorization.