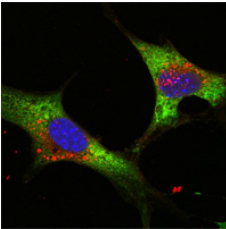


Goat Anti-Mouse IgG (H+L) FITC -conjugated

[References\(5\)](#) [Images\(1\)](#)

Cat.#: S0007	Concn.: 1mg/ml	Mol.Wt.:
Size: 100ul,1ml,500ul	Source: Goat	Clonality: Polyclonal

Application:	WB 1:100 – 1:500, IF/ICC 1:100 – 1:500 *The optimal dilutions should be determined by the end user.
Reactivity:	Mouse
Storage:	0.01M Sodium phosphate, 0.25M NaCl, 50% glycerol, pH7.6.Store at -20??avoid repeated thawing and freezing.
Purification:	affinity purification.
Immunogen:	The antiserum was developed in goat using the MOUSE IgG as the immunogen.
Conjugate:	FITC



Confocal immunofluorescence analysis of NTERA-2 cells using LIN28 mouse mAb (green).
Blue: DRAQ5 fluorescent DNA dye.
Green: Goat Anti-Mouse IgG(H+L) FITC –conjugated

IMPORTANT: For western blot, incubate membrane with diluted secondary Ab in 5% w/v milk , 1X TBS, 0.1% Tween@20 at 37°C, 2H.

For Research Use Only. Not for use in diagnostic and therapeutic procedures. Not for resale without express authorization.