

Goat Anti-Mouse IgG (H+L) Fluor488-conjugated

[References\(1\)](#) [Images\(1\)](#)

Cat.#: S0017 Concn.: 1mg/ml Mol.Wt.:
Size: 100ul,1ml,500ul Source: Goat Clonality: Polyclonal

Application: WB 1:100 – 1:500, IF/ICC 1:100 – 1:500
*The optimal dilutions should be determined by the end user.

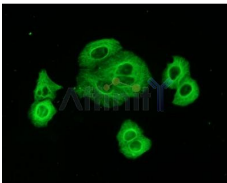
Reactivity: Mouse

Storage: 0.01M Sodium phosphate, 0.25M NaCl, 50% glycerol, pH7.6.Store at
-20??avoid repeated thawing and freezing.

Purification: affinity purification.

Immunogen: The antiserum was developed in goat using the MOUSE IgG as the
immunogen.

Conjugate: Fluor488



immunofluorescence analysis of HeLa cells using tubulin mouse mAb.
Green: Goat Anti-Mouse IgG(H+L) Alexa Fluor488 –conjugated

IMPORTANT: For western blot, incubate membrane with diluted secondary Ab in 5% w/v milk , 1X TBS, 0.1% Tween@20 at 37°C, 2H.

For Research Use Only. Not for use in diagnostic and therapeutic procedures. Not for resale without express authorization.