

Goat Anti-Rabbit IgG (H+L) Fluor488-conjugated

[References\(4\)](#) [Images\(1\)](#)

Cat.#: S0018 Concn.: 1mg/ml Mol.Wt.:
Size: 100ul,1ml,500ul Source: Goat Clonality: Polyclonal

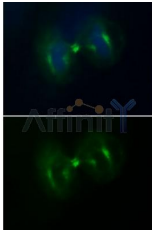
Application: WB 1:100 – 1:500, IF/ICC 1:100-1:500
*The optimal dilutions should be determined by the end user.

Reactivity: Rabbit

Storage: 0.01M Sodium phosphate, 0.25M NaCl, 50% glycerol, pH7.6. Store at
-20??avoid repeated thawing and freezing.

Immunogen: The antiserum was developed in goat using the Rabbit IgG as the
immunogen.

Conjugate: Fluor488



Immunofluorescence analysis of HepG2 cells during mitosis.
Green: Goat Anti-Rabbit IgG(H+L) Alexa Fluor488.
Blue: DAPI.

IMPORTANT: For western blot, incubate membrane with diluted secondary Ab in 5% w/v milk, 1X TBS, 0.1% Tween@20 at 37°C, 2H.

For Research Use Only. Not for use in diagnostic and therapeutic procedures. Not for resale without express authorization.