

**SAA544Mu08****FITC-Linked Rabbit Anti-Mouse IgG Antibody****Organism Species: *Mus musculus* (Mouse)*****Instruction manual***

FOR IN VITRO USE AND RESEARCH USE ONLY

NOT FOR USE IN CLINICAL DIAGNOSTIC PROCEDURES

11th Edition (Revised in May, 2016)

**[ PROPERTIES ]****Source:** Antibody labeling**Host:** Rabbit**Purification:** Antigen-specific Affinity Chromatography.**Label:** FITC**Traits:** Liquid**Concentration:** 200µg/mL**UOM:** 100µg**Applications:** WB; IF; IP; IHC-P; IHC-F; ELISA.**[ IMMUNOGEN ]****Immunogen:** IgG, Mouse**[ APPLICATIONS ]**

Western blotting: 1:2000-10000

Immunoprecipitation: 1:2000-10000

Immunohistochemistry in formalin fixed frozen section: 1:200-1000

Immunohistochemistry in paraffin section: 1:200-1000

Enzyme-linked Immunosorbent Assay: 1:4000-15000

Optimal working dilutions must be determined by end user.

**[ FORMULATION ]****Form & Buffer:** Supplied as solution form in PBS, pH7.4, containing 0.02% NaN<sub>3</sub>, 50% glycerol.

## **[ STORAGE AND STABILITY ]**

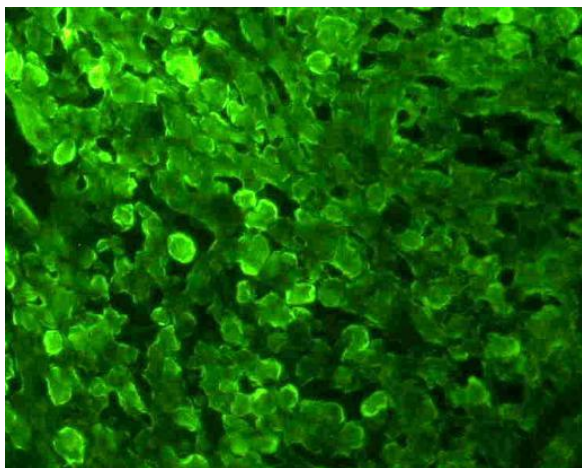
**Storage:** Avoid repeated freeze/thaw cycles.

Store at 4°C for frequent use.

Aliquot and store at -20°C for 12 months.

**Stability Test:** The thermal stability is described by the loss rate. The loss rate was determined by accelerated thermal degradation test, that is, incubate the protein at 37°C for 48h, and no obvious degradation and precipitation were observed. The loss rate is less than 5% within the expiration date under appropriate storage condition.

## **[ IDENTIFICATION ]**



**Figure 1: FITC staining on IHC-P, Sample: Human Prostate Gland Tissue**

**Primary Ab: 3µg/mL Mouse Anti-Human NSE Ab (Catalog: MAA537Hu22)**

**Second Ab: 1:500 Dilution of FITC-Linked Rabbit Anti-Mouse IgG Ab (Catalog: SAA544Mu08)**