

**EPB028Hu51 100ug**

**Eukaryotic Albumin (ALB)**

**Organism Species: Homo sapiens (Human)**

***Instruction manual***

FOR IN VITRO USE AND RESEARCH USE ONLY

NOT FOR USE IN CLINICAL DIAGNOSTIC PROCEDURES

---

---

11th Edition (Revised in May, 2016)

## **[ PROPERTIES ]**

**Source:** Eukaryotic expression.

**Host:** Yeast

**Residues:** Asp25~Leu609

**Tags:** N-terminal His Tag

**Homology:** Mouse 73%, rat 72%

**Tissue Specificity:** Plasm.

**Subcellular Location:** Secreted.

**Purity:** >95%

**Endotoxin Level:** <1.0EU per 1µg (determined by the LAL method).

**Traits:** Freeze-dried powder

**Buffer Formulation:** 20mM Tris, 150mM NaCl, pH8.0, containing 1mM EDTA, 1mM DTT, 5%Trehalose and Proclin300.

**Original Concentration:** 200ug/mL

**Predicted isoelectric point:** 5.7

**Predicted Molecular Mass:** 66.4kDa

**Accurate Molecular Mass:** 66kDa as determined by SDS-PAGE reducing conditions.

**Applications:** SDS-PAGE; WB; ELISA; IP; CoIP; EMSA; Reporter Assays; Purification; Amine Reactive Labeling.

(May be suitable for use in other assays to be determined by the end user.)

## [ USAGE ]

Reconstitute in 20mM Tris, 150mM NaCl (pH8.0) to a concentration of 0.1-1.0 mg/mL. Do not vortex

## [ STORAGE AND STABILITY ]

**Storage:** Avoid repeated freeze/thaw cycles.

Store at 2-8°C for one month.

Aliquot and store at -80°C for 12 months.

**Stability Test:** The thermal stability is described by the loss rate. The loss rate was determined by accelerated thermal degradation test, that is, incubate the protein at 37°C for 48h, and no obvious degradation and precipitation were observed. The loss rate is less than 5% within the expiration date under appropriate storage condition.

## [ SEQUENCE ]

```
                DAHKSE VAHRFKDLGE ENFKALVLIA
FAQYLQQCPF EDHVKLVNEV TEFKTCVAD ESAENCDKSL HTLFGDKLCT
VATLRETYGE MADCCAQEP ERNECFLQHK DDNPNLPRLV RPEVDVMCTA
FHDNEETFLK KYLYEIARRH PYFYAPELLF FAKRYKAAFT ECCQAADKAA
CLLPKLDELRL DEGKASSAKQ RLKCASLQKF GERAFAKAWAV ARLSQRFPKA
EFAEVSKLVT DLTKVHTECC HGDLLLECADD RADLAKYICE NQDSISSKLL
ECCEKPLLEK SHCIAEVEND EMPADLPSLA ADFVESKDVC KNYAEAKDVF
LGMFLYEYAR RHPDYSVLL LRLAKTYETT LEKCCAAADP HECYAKVFDE
FKPLVEEPQN LIKQNCLEFE QLGEYKFQNA LLVRYTKKVP QVSTPTLVEV
SRNLGKVGSK CCKHPEAKRM PCAEDYLSV LNQLCVLHEK TPVSDRVTKC
CTESLVNRRP CFSALEVDET YVPKEFNAET FTFHADICTL SEKERQIKKQ
TALVELVKHK PKATKEQLKA VMDDFAAFVE KCKKADDKET CFAEEGKKLV
AASQAALGL
```



[ **IDENTIFICATION** ]

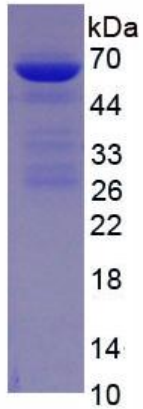


Figure 1. SDS-PAGE