

**EPB686Hu61 100ug**

**Eukaryotic B-Cell Activating Factor (BAFF)**

**Organism Species: Homo sapiens (Human)**

***Instruction manual***

FOR IN VITRO USE AND RESEARCH USE ONLY

NOT FOR USE IN CLINICAL DIAGNOSTIC PROCEDURES

---

---

11th Edition (Revised in May, 2016)

## **[ PROPERTIES ]**

**Source:** Eukaryotic expression.

**Host:** 293F cell

**Residues:** Ala134~Leu285

**Tags:** Two Tags, His-tag and Fc-tag

**Homology:** Mouse 60%, Rat 26%

**Tissue Specificity:** Spleen, marrow.

**Subcellular Location:** Cell membrane. Single-pass type II membrane protein.

Secreted.

**Purity:** >95%

**Endotoxin Level:** <1.0EU per 1µg (determined by the LAL method).

**Traits:** Freeze-dried powder

**Buffer Formulation:** 20mM Tris, 150mM NaCl, pH8.0, containing 1mM EDTA, 1mM DTT, 5%Trehalose and Proclin300.

**Original Concentration:** 200ug/mL

**Predicted isoelectric point:** 4.9

**Predicted Molecular Mass:** 43.9kDa

**Accurate Molecular Mass:** 44kDa as determined by SDS-PAGE reducing conditions.

**Applications:** SDS-PAGE; WB; ELISA; IP; CoIP; EMSA; Reporter Assays; Purification; Amine Reactive Labeling.

(May be suitable for use in other assays to be determined by the end user.)

## [ USAGE ]

Reconstitute in 20mM Tris, 150mM NaCl (pH8.0) to a concentration of 0.1-1.0 mg/mL. Do not vortex

## [ STORAGE AND STABILITY ]

**Storage:** Avoid repeated freeze/thaw cycles.

Store at 2-8°C for one month.

Aliquot and store at -80°C for 12 months.

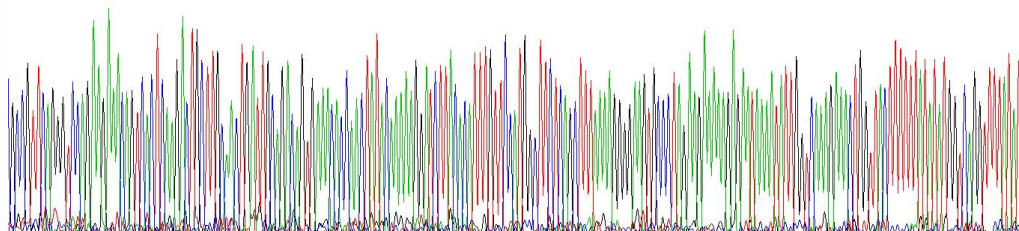
**Stability Test:** The thermal stability is described by the loss rate. The loss rate was determined by accelerated thermal degradation test, that is, incubate the protein at 37°C for 48h, and no obvious degradation and precipitation were observed. The loss rate is less than 5% within the expiration date under appropriate storage condition.

## [ SEQUENCE ]

```
AVQGPEE TVTQDCLQLI  
ADSETPTIQK GSYTFVPWLL SFKRGSAL EE KENKILVKET GYFFIYGQVL  
YTDKTYAMGH LIQRKKVHVF GDELSLVTLF RCIQNMPETL PNNSCYSAGI  
AKLEEGDELQ LAIPRENAQI SLDGDVTFFG ALKLL
```

## [ IDENTIFICATION ]

```
000GTTCA0GGST00GAGMAGCAGTCACTCANGCTGCTTTC0ACCTGATTC0GACMGISAMCIC0ACCTATAGAAAAGS0CCTTAGCATTTTGTTCATG0GCTTCT0GCTTTAAAAG0G0GAGTCC0CTAGMAMAG0GATAMATATG0GCAAMGAMCTG0TACTTTTTATATAGGICAGGTTTTAT  
A V Q G P E E T V T Q D C L Q L I A D S E T P T I Q K G S Y T F V P W L L S F K R G S A L E E K E N K I L V K E T G Y F F I Y G Q V L Y
```



**Figure 1. Gene Sequencing (extract)**

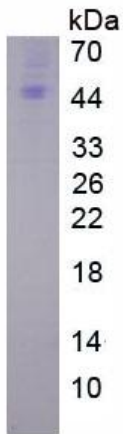


Figure 2. SDS-PAGE