

**EPC514Hu61 100ug**

**Eukaryotic Growth Factor Receptor Bound Protein 2 (Grb2)**

**Organism Species: Homo sapiens (Human)**

***Instruction manual***

FOR IN VITRO USE AND RESEARCH USE ONLY

NOT FOR USE IN CLINICAL DIAGNOSTIC PROCEDURES

---

---

11th Edition (Revised in May, 2016)

## **[ PROPERTIES ]**

**Source:** Eukaryotic expression.

**Host:** 293F cell

**Residues:** Met1~Val217

**Tags:** N-terminal His Tag

**Homology:** Mouse 99%, Rat 100%

**Tissue Specificity:** Brain, lung, placenta.

**Subcellular Location:** Nucleus. Cytoplasm. Endosome. Golgi apparatus.

**Purity:** >95%

**Endotoxin Level:** <1.0EU per 1µg (determined by the LAL method).

**Traits:** Freeze-dried powder

**Buffer Formulation:** 20mM Tris, 150mM NaCl, pH8.0, containing 1mM EDTA, 1mM DTT, 5%Trehalose and Proclin300.

**Original Concentration:** 200ug/mL

**Predicted isoelectric point:** 5.9

**Predicted Molecular Mass:** 26.8kDa

**Accurate Molecular Mass:** 27kDa as determined by SDS-PAGE reducing conditions.

**Applications:** SDS-PAGE; WB; ELISA; IP; CoIP; EMSA; Reporter Assays; Purification; Amine Reactive Labeling.

(May be suitable for use in other assays to be determined by the end user.)

## [ USAGE ]

Reconstitute in 20mM Tris, 150mM NaCl (pH8.0) to a concentration of 0.1-1.0 mg/mL. Do not vortex

## [ STORAGE AND STABILITY ]

**Storage:** Avoid repeated freeze/thaw cycles.

Store at 2-8°C for one month.

Aliquot and store at -80°C for 12 months.

**Stability Test:** The thermal stability is described by the loss rate. The loss rate was determined by accelerated thermal degradation test, that is, incubate the protein at 37°C for 48h, and no obvious degradation and precipitation were observed. The loss rate is less than 5% within the expiration date under appropriate storage condition.

## [ SEQUENCE ]

```
MEAIKYDFK ATADDELSFK RGDILKVLNE ECDQNWYKAE LNGKDGFIKP  
NYIEMKPHPW FFGKIPRAKA EEMLSKQRHD GAFLIRESES APGDFSLSVK  
FGNDVQHFKV LRDGAGKYFL WVKFNSLNE LVDYHRSTSV SRNQQIFLRD  
IEQVPQQPTY VQALDFDFPQ EDGELGFRRG DFIHVMDNSD PNWWKGACHG  
QTGMFPRNVV TPVNRNV
```

## [ IDENTIFICATION ]

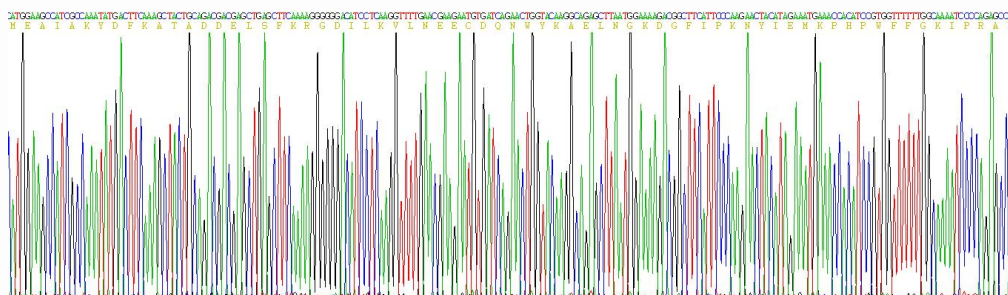


Figure 1. Gene Sequencing (extract)

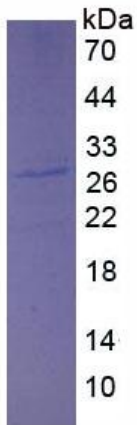


Figure 2. SDS-PAGE