

**MAH756Hu21**  
**Monoclonal Antibody to Klotho Beta (KLb)**  
**Organism Species: Homo sapiens (Human)**  
*Instruction manual*

FOR IN VITRO USE AND RESEARCH USE ONLY  
NOT FOR USE IN CLINICAL DIAGNOSTIC PROCEDURES

---

---

12th Edition (Revised in Aug, 2016)

## **[ PROPERTIES ]**

**Source:** Monoclonal antibody preparation

**Host:** Mouse

**Antibody isotype:** IgG2a Kappa

**Purification:** Protein A/G Affinity Chromatography.

**Clone number:** 4#

**Traits:** Liquid

**Concentration:** 500µg/mL

**UOM:** 10µg

**Applications:** WB; IHC; ICC; IP.

## **[ IMMUNOGEN ]**

**Immunogen:** Recombinant KLb (Val517~Ser636) expressed in *E.coli*.

**Accession No.:** RPH756Hu01

## **[ APPLICATIONS ]**

Western blotting: 0.5-5µg/mL

Immunocytochemistry in formalin fixed cells: 5-30µg/mL

Immunohistochemistry in formalin fixed frozen section: 5-30µg/mL

Immunohistochemistry in paraffin section: 5-30µg/mL

Optimal working dilutions must be determined by end user.

## **[ FORMULATION ]**

**Form & Buffer:** Supplied as solution form in 0.01M PBS, pH7.4, containing 0.05% Proclin-300, 50% glycerol.

## **[ STORAGE AND STABILITY ]**

**Storage:** Avoid repeated freeze/thaw cycles.

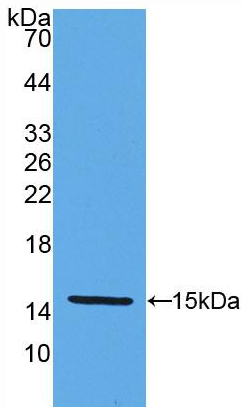
Store at 4°C for frequent use.

Aliquot and store at -20°C for 12 months.

**Stability Test:** The thermal stability is described by the loss rate. The loss rate was determined by accelerated thermal degradation test, that is, incubate the

protein at 37°C for 48h, and no obvious degradation and precipitation were observed. The loss rate is less than 5% within the expiration date under appropriate storage condition.

## **[ IDENTIFICATION ]**



**Figure 1. Western Blot**

**Sample: Recombinant KLb, Human**