

MAL231Ra21**Monoclonal Antibody to Alpha-2-Glycoprotein 1, Zinc Binding (aZGP1)****Organism Species: Rattus norvegicus (Rat)*****Instruction manual***

FOR IN VITRO USE AND RESEARCH USE ONLY

NOT FOR USE IN CLINICAL DIAGNOSTIC PROCEDURES

11th Edition (Revised in May, 2016)

[PROPERTIES]**Source:** Monoclonal antibody preparation**Host:** Mouse**Antibody isotype:** IgG2b Kappa**Purification:** Protein A/G Affinity Chromatography.**Clone number:** C9**Traits:** Liquid**Concentration:** 500µg/mL**UOM:** 200µg**Applications:** WB; ICC; IHC-P; IHC-F; ELISA; IP; IF; FCM.**[IMMUNOGEN]****Immunogen:** RPL231Ra01-Recombinant Alpha-2-Glycoprotein 1, Zinc Binding (aZGP1)**[APPLICATIONS]**

Western blotting: 0.5-5ug/ml

Immunocytochemistry in formalin fixed cells: 5-30ug/ml

Immunohistochemistry in formalin fixed frozen section: 5-30ug/ml

Immunohistochemistry in paraffin section: 5-30ug/ml

Enzyme-linked Immunosorbent Assay: 0.05-2ug/ml

Optimal working dilutions must be determined by end user.

[FORMULATION]**Form & Buffer:** Supplied as solution form in PBS, pH7.4, containing 0.02% NaN₃,

50% glycerol.

[QUALITY CONTROL]

Content: The quality control contains recombinant aZGP1 disposed in loading buffer.

Usage: 10uL per well when 3,3'-Diaminobenzidine (DAB) as the substrate.
5uL per well when used in enhanced chemiluminescent (ECL).

Note: The quality control is specifically manufactured as the positive control. Not used for other purposes.

Loading Buffer: 100mM Tris(pH6.8), 1% SDS, 150mM NaCl, 50% glycerol, 0.02% BPB, 50mM DTT and 0.02% NaN₃.

[STORAGE AND STABILITY]

Storage: Avoid repeated freeze/thaw cycles.

Store at 4°C for frequent use.

Aliquot and store at -20°C for 12 months.

Stability Test: The thermal stability is described by the loss rate. The loss rate was determined by accelerated thermal degradation test, that is, incubate the protein at 37°C for 48h, and no obvious degradation and precipitation were observed. The loss rate is less than 5% within the expiration date under appropriate storage condition.

[IDENTIFICATION]

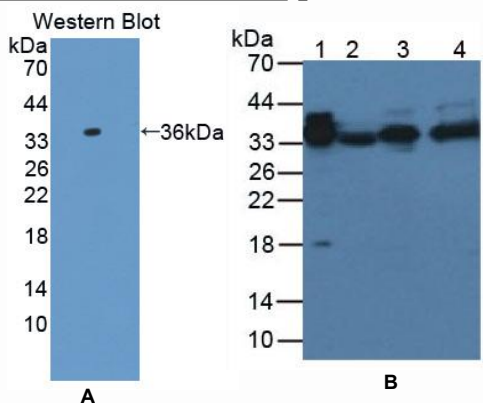


Figure 1. Western Blot

A. Sample: Recombinant aZGP1, Rat

B. Lane1: Rat Serum

Lane2: Rat Liver Tissue

Lane3: Rat Lung Tissue

Lane4: Rat Heart Tissue

Primary Ab: 3µg/mL Rabbit Anti-Rat aZGP1 Ab

Second Ab: 1:5000 Dilution of HRP-Linked Rabbit Anti-Mouse IgG Ab (Catalog: SAA544Mu09)

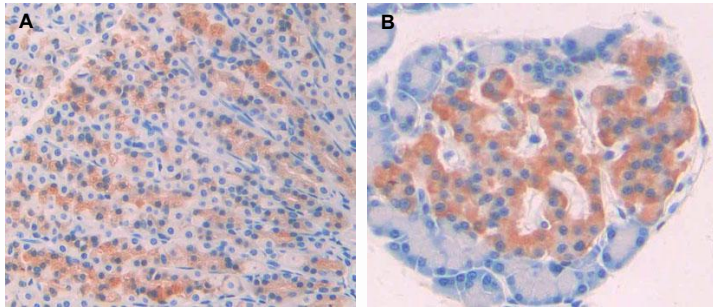


Figure 2. DAB staining on IHC-P

Samples:

- A. Rat Stomach Tissue**
- B. Rat Pancreas Tissue**