

PAA605Ca01**Polyclonal Antibody to Adiponectin (ADP)****Organism Species: *Canis familiaris*; Canine (Dog)*****Instruction manual***

FOR IN VITRO USE AND RESEARCH USE ONLY

NOT FOR USE IN CLINICAL DIAGNOSTIC PROCEDURES

10th Edition (Revised in Jan, 2014)

[PRODUCT INFORMATION]**Immunogen:** ADP, Canine**Clonality:** Polyclonal**Host:** Rabbit**Immunoglobulin Type:** IgG**Purification:** Affinity Chromatography.**Applications:** WB, ICC, IHC-P, IHC-F, ELISA**Concentration:** 200µg/mL**UOM:** 100µg**[IMMUNOGEN INFORMATION]****Immunogen:** Recombinant ADP (Gln18~Asn244) with two N-terminal Tags, His-tag and GST-tag expressed in *E.coli*.**Accession No.:** RPA605Ca01**[ANTIBODY SPECIFICITY]**

The antibody is a rabbit polyclonal antibody raised against ADP. It has been selected for its ability to recognize ADP in immunohistochemical staining and western blotting.

[APPLICATIONS]

Western blotting: 1:50-400

Immunocytochemistry in formalin fixed cells: 1:50-500

Immunohistochemistry in formalin fixed frozen section: 1:50-500

Immunohistochemistry in paraffin section: 1:10-100

Enzyme-linked Immunosorbent Assay: 1:100-5000

Optimal working dilutions must be determined by end user.

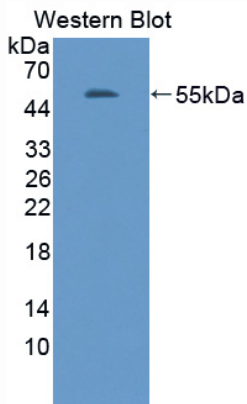
[**CONTENTS**]

Form & Buffer: Supplied as solution form in PBS, pH7.4, containing 0.02% NaN₃, 50% glycerol.

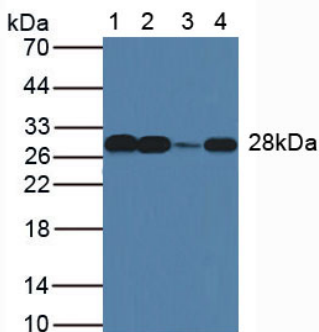
[**STORAGE**]

Store at 4°C for frequent use. Stored at -20°C in a manual defrost freezer for one year without detectable loss of activity. Avoid repeated freeze-thaw cycles.

[**IMAGES**]



Used in Western Blot, Sample:
Recombinant ADP, Canine



Used in Western Blot, Sample:

Lane1: Canine Serum

Lane2: Canine Heart Tissue

Lane3: Canine Lung Tissue

Lane4: Canine Muscle Tissue

Primary Ab: 2µg/mL Rabbit Anti-Dog ADP Ab

Second Ab: 1:1000 Dilution of HRP-Linked Guinea pig

Anti-Rabbit Ab (Catalog: SECab05)