

PAB028Si01
Polyclonal Antibody to Albumin (ALB)
Organism Species: Rhesus monkey (Simian)
Instruction manual

FOR IN VITRO USE AND RESEARCH USE ONLY
NOT FOR USE IN CLINICAL DIAGNOSTIC PROCEDURES

12th Edition (Revised in Aug, 2016)

[PROPERTIES]

Source: Polyclonal antibody preparation

Host: Rabbit

Purification: Antigen-specific Affinity Chromatography.

Traits: Liquid

Concentration: 200µg/mL

UOM: 100µg

Applications: WB; IHC; ICC; IP.

[IMMUNOGEN]

Immunogen: Native Protein ALB.

Accession No.: NPB028Si01

[APPLICATIONS]

Western blotting: 0.5-2µg/mL

Immunocytochemistry in formalin fixed cells: 5-20µg/mL

Immunohistochemistry in formalin fixed frozen section: 5-20µg/mL

Immunohistochemistry in paraffin section: 5-20µg/mL

Optimal working dilutions must be determined by end user.

[FORMULATION]

Form & Buffer: Supplied as solution form in 0.01M PBS, pH7.4, containing 0.05% Proclin-300, 50% glycerol.

[STORAGE AND STABILITY]

Storage: Avoid repeated freeze/thaw cycles.

Store at 4°C for frequent use.

Aliquot and store at -20°C for 12 months.

Stability Test: The thermal stability is described by the loss rate. The loss rate was determined by accelerated thermal degradation test, that is, incubate the protein at 37°C for 48h, and no obvious degradation and precipitation were observed. The loss rate is less than 5% within the expiration date under appropriate storage condition.

[IDENTIFICATION]

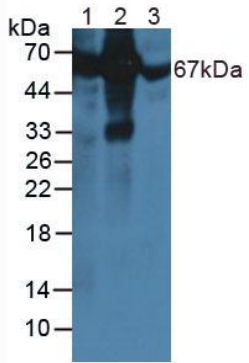


Figure 1. Western Blot

Sample:

Lane1: Rat Liver Tissue

Lane2: Rat Serum

Lane3: Bovine Serum

Primary Ab: 1 μ g/mL Rabbit Anti-Simian ALB Ab

**Second Ab: 1:2000 Dilution of HRP-Linked Guinea pig
Anti-Rabbit Ab (Catalog: SAA544Rb59)**