

**RPB171Ra01 100µg**  
**Recombinant Transferrin Receptor (TFR)**  
**Organism Species: Rattus norvegicus (Rat)**  
***Instruction manual***

FOR IN VITRO USE AND RESEARCH USE ONLY  
NOT FOR USE IN CLINICAL DIAGNOSTIC PROCEDURES

---

---

12th Edition (Revised in Aug, 2016)

## [ **PROPERTIES** ]

**Source:** Prokaryotic expression.

**Host:** *E. coli*

**Residues:** Met587~Asn756

**Tags:** N-terminal His-Tag

**Subcellular Location:** Cell membrane; Single-pass type II membrane protein.

Melanosome.

**Purity:** >98%

**Traits:** Freeze-dried powder

**Buffer formulation:** 20mM Tris, 150mM NaCl, pH8.0, containing 1mM EDTA, 1mM DTT, 0.01% sarcosyl, 5%Trehalose and Proclin300.

**Original Concentration:** 200ug/mL

**Applications:** SDS-PAGE; WB; ELISA; IP; CoIP; ReporterAssays; Purification; Amine Reactive Labeling.

(May be suitable for use in other assays to be determined by the end user.)

**Predicted isoelectric point:** 5.2

**Predicted Molecular Mass:** 21.1kDa

**Accurate Molecular Mass:** 22kDa as determined by SDS-PAGE reducing conditions.

## [ **USAGE** ]

Reconstitute in 20mM Tris, 150mM NaCl (pH8.0) to a concentration of 0.1-1.0 mg/mL. Do not vortex.

## [ **STORAGE AND STABILITY** ]

**Storage:** Avoid repeated freeze/thaw cycles.

Store at 2-8°C for one month.

Aliquot and store at -80°C for 12 months.

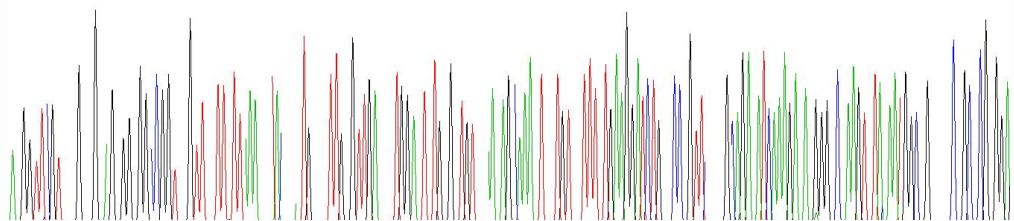
**Stability Test:** The thermal stability is described by the loss rate. The loss rate was determined by accelerated thermal degradation test, that is, incubate the protein at 37°C for 48h, and no obvious degradation and precipitation were observed. The loss rate is less than 5% within the expiration date under appropriate storage condition.

**[ SEQUENCE ]**

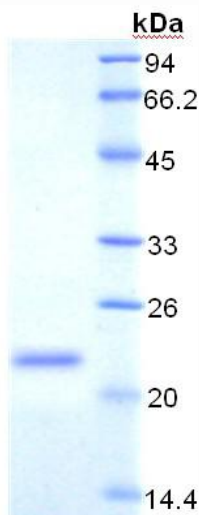
MVRT AAEVAGQFII  
 KLTHDIELTL DYEMYSKLL SFMKDLNQFK ADIKDMGLSL QWLYSARGDY  
 FRATSRLLTD FHNAEKTNRV VMREINDRIM KVEYHFLSPY VSPRESPFRH  
 IFWGSGSHTL SALVENLRLR QKNITAFNET LFRNQLALAT WTIQGVANAL  
 SGDIWN

**[ IDENTIFICATION ]**

ATGGTTGTGACAGCGAGAGGGTGGCGGTCAGTCAATTATTAACTTACCCATGACATTTGAGTTGACCCCTGAGACTATGAGATGTCACGACAACTACTGTCATTTATGAGGATCTGACCAAGTTCACAGCATATCAAGATATGGTCTAAGTCTACATGGCTGTATTCTGCCTGGG  
 H V R T A A E V A G Q F I I K L T H D I E L T L D Y E M Y S K L L S F N K D I N O F K A D I K D M G L S I O V L Y S A R G :



**Figure 1. Gene Sequencing (Extract)**



**Figure 2. SDS-PAGE**