

**RPB463Ra01 50µg**  
**Recombinant Glycoprotein 39, Cartilage (GP39)**  
**Organism Species: Rattus norvegicus (Rat)**  
***Instruction manual***

FOR IN VITRO USE AND RESEARCH USE ONLY  
NOT FOR USE IN CLINICAL DIAGNOSTIC PROCEDURES

---

---

12th Edition (Revised in Aug, 2016)

## [ **PROPERTIES** ]

**Source:** Prokaryotic expression.

**Host:** *E. coli*

**Residues:** Tyr117~Lys364

**Tags:** N-terminal His-Tag

**Tissue Specificity:** Brain.

**Subcellular Location:** Secreted, extracellular space. Cytoplasm, perinuclear region. Endoplasmic reticulum.

**Purity:** >95%

**Traits:** Freeze-dried powder

**Buffer formulation:** 100mM NaHCO<sub>3</sub>, 500mM NaCl, pH8.3, containing 1mM EDTA, 1mM DTT, 0.01% sarcosyl, 5%Trehalose and Proclin300.

**Original Concentration:** 200µg/mL

**Applications:** Positive Control; Immunogen; SDS-PAGE; WB.

(May be suitable for use in other assays to be determined by the end user.)

**Predicted isoelectric point:** 8.7

**Predicted Molecular Mass:** 31.2kDa

**Accurate Molecular Mass:** 29kDa as determined by SDS-PAGE reducing conditions.

## [ **USAGE** ]

Reconstitute in 100mM NaHCO<sub>3</sub>, 500mM NaCl (pH8.3) to a concentration of 0.1-1.0 mg/mL. Do not vortex.

## [ **STORAGE AND STABILITY** ]

**Storage:** Avoid repeated freeze/thaw cycles.

Store at 2-8°C for one month.

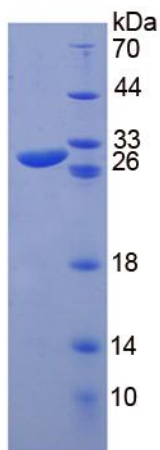
Aliquot and store at -80°C for 12 months.

**Stability Test:** The thermal stability is described by the loss rate. The loss rate was determined by accelerated thermal degradation test, that is, incubate the protein at 37°C for 48h, and no obvious degradation and precipitation were observed. The loss rate is less than 5% within the expiration date under appropriate storage condition.

**[ SEQUENCE ]**

				YGFD
GLDLAWLYPG	PKDKQHFTTL	IKELKAEFTK	EVQPGTEKLL	LSAAVSAGKV
TLDSGYDVAQ	IAQHLDIFINL	MTYDFHGTWR	HTTGHHSPLF	RGQQDTGPDR
FSNVDYGVGY	MLRLGAPTNK	LVMGIPTFGK	SFTLASSENQ	VGAPITGSSL
PGRYTKKEGT	LAYYEICDFL	RGAEVHRILG	QQVPFATKGN	QWVGYYDDPES
VKNKVLYLKN	KQLAGAMVWA	VDLDDFRGSF	CGHNVHFPLT	NAIK

**[ IDENTIFICATION ]**



**Figure 1. SDS-PAGE**