

RPB762Hu02 50µg
Recombinant Inhibin Beta B (INHbB)
Organism Species: Homo sapiens (Human)
Instruction manual

FOR IN VITRO USE AND RESEARCH USE ONLY
NOT FOR USE IN CLINICAL DIAGNOSTIC PROCEDURES

12th Edition (Revised in Aug, 2016)

[PROPERTIES]

Source: Prokaryotic expression.

Host: *E. coli*

Residues: Gly50~Cys404

Tags: Two N-terminal Tags, His-tag and GST-tag

Tissue Specificity: Brain.

Subcellular Location: Secreted.

Purity: >95%

Traits: Freeze-dried powder

Buffer formulation: 20mM Tris, 150mM NaCl, pH8.0, containing 1mM EDTA, 1mM DTT, 0.01% sarcosyl, 5%Trehalose and Proclin300.

Original Concentration: 200ug/mL

Applications: Positive Control; Immunogen; SDS-PAGE; WB.

(May be suitable for use in other assays to be determined by the end user.)

Predicted isoelectric point: 7.6

Predicted Molecular Mass: 70.2kDa

Accurate Molecular Mass: 70kDa as determined by SDS-PAGE reducing conditions.

[USAGE]

Reconstitute in 20mM Tris, 150mM NaCl (pH8.0) to a concentration of 0.1-1.0 mg/mL. Do not vortex.

[STORAGE AND STABILITY]

Storage: Avoid repeated freeze/thaw cycles.

Store at 2-8°C for one month.

Aliquot and store at -80°C for 12 months.

Stability Test: The thermal stability is described by the loss rate. The loss rate was determined by accelerated thermal degradation test, that is, incubate the protein at 37°C for 48h, and no obvious degradation and precipitation were observed. The loss rate is less than 5% within the expiration date under appropriate storage condition.

[SEQUENCE]

G

SQDTCTSCGG FRRPEELGRV DGDFFLEAVKR HILSRLQMRG RPNITHAVPK
 AAMVTALRKL HAGKVEDGR VEIPHLDGHA SPGADGQERV SEIISFAETD
 GLASSRVRLY FFISNEGNQN LFVVQASLWL YLKLLPYVLE KGSRRKVRVK
 VYFQEQQHGQD RWNMVEKRVD LKRSQWHTFP LTEAIQALFE RGERRLNLDV
 QCDCSQELAV VPVFVDPGEE SHRPFVVVQA RLGDSRHRIR KRGLECDGRT
 NLCCRQOFFI DFRLLIGWNDW IIAPTGYGYN YCEGSCPAYL AGVPGSASSF
 HTAVVNQYRM RGLNPGTVNS CCIPTKLSTM SMLYFDDEYN IVKRDVPNMI
 VEEC

[IDENTIFICATION]

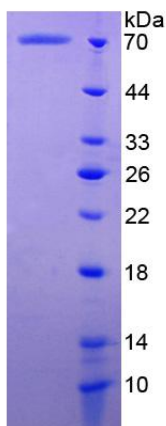


Figure 1. SDS-PAGE