

**RPB818Po01 50µg**

**Recombinant Vascular Endothelial Growth Factor Receptor 1 (VEGFR1)**

**Organism Species: *Sus scrofa*; Porcine (Pig)**

***Instruction manual***

FOR IN VITRO USE AND RESEARCH USE ONLY

NOT FOR USE IN CLINICAL DIAGNOSTIC PROCEDURES

---

---

11th Edition (Revised in May, 2016)

## **[ PROPERTIES ]**

**Source:** Prokaryotic expression.

**Host:** *E. coli*

**Residues:** Pro167~Ala424

**Tags:** Two N-terminal Tags, His-tag and GST-tag

**Tissue Specificity:** Lung, Liver, Kidney, Heart, Brain.

**Purity:** >98%

**Traits:** Freeze-dried powder

**Buffer formulation:** 20mM Tris, 150mM NaCl, pH8.0, containing 1mM EDTA, 1mM DTT, 0.01% sarcosyl, 5%Trehalose and Proclin300.

**Original Concentration:** 200ug/mL

**Applications:** SDS-PAGE; WB; ELISA; IP; CoIP; Reporter Assays; Purification; Amine Reactive Labeling.

(May be suitable for use in other assays to be determined by the end user.)

**Predicted isoelectric point:** 8.6

**Predicted Molecular Mass:** 60.9kDa

**Accurate Molecular Mass:** 59kDa as determined by SDS-PAGE reducing conditions.

## **[ USAGE ]**

Reconstitute in 20mM Tris, 150mM NaCl (pH8.0) to a concentration of 0.1-1.0 mg/mL. Do not vortex.

## [ STORAGE AND STABILITY ]

**Storage:** Avoid repeated freeze/thaw cycles.

Store at 2-8°C for one month.

Aliquot and store at -80°C for 12 months.

**Stability Test:** The thermal stability is described by the loss rate. The loss rate was determined by accelerated thermal degradation test, that is, incubate the protein at 37°C for 48h, and no obvious degradation and precipitation were observed. The loss rate is less than 5% within the expiration date under appropriate storage condition.

## [ SEQUENCE ]

```
PEPQ ITWFKNNH KI QQEPALFYGQ EAARCLLKES  
RKR MKASITA EPPTRRGPRR ARHTSPCKMS SSEIKADYLS IIMDPDEVPL  
DEQCERLPYD ASKWEFARER LKLGKSLGRG AFGKVVQASA FGIKKSPTCR  
TVAVKMLKEG ATASEYKALM TELKILTHIG HHLNVVNL LG ACTKQGGPLM  
VIVEYCKYGN LSNYLKSKRA LFFINKDAAL HVEPKKEKME PDPEPGKKQR  
LDSVTSSSEF ASSGFQEDKS LSDA
```

## [ IDENTIFICATION ]

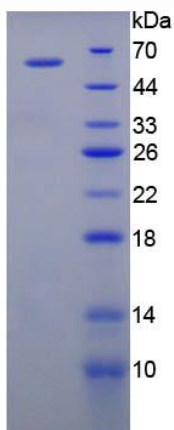


Figure 1. SDS-PAGE