

RPC321Mu01 50 μ g
Recombinant Asporin (ASPN)
Organism Species: *Mus musculus* (Mouse)
Instruction manual

FOR IN VITRO USE AND RESEARCH USE ONLY
NOT FOR USE IN CLINICAL DIAGNOSTIC PROCEDURES

12th Edition (Revised in Aug, 2016)

[**PROPERTIES**]

Source: Prokaryotic expression.

Host: *E. coli*

Residues: Lys16~Lys373

Tags: Two N-terminal Tags, His-tag and GST-tag

Tissue Specificity: Heart, Testis, Stomach.

Subcellular Location: Secreted, extracellular space, extracellular matrix.

Purity: >95%

Traits: Freeze-dried powder

Buffer formulation: 100mM NaHCO₃, 500mM NaCl, pH8.3, containing 1mM EDTA, 1mM DTT, 0.01% sarcosyl, 5%Trehalose and Proclin300.

Original Concentration: 200ug/mL

Applications: SDS-PAGE; WB; ELISA; IP; CoIP; Purification; Amine Reactive Labeling.

(May be suitable for use in other assays to be determined by the end user.)

Predicted isoelectric point: 8.8

Predicted Molecular Mass: 70.9kDa

Accurate Molecular Mass: 71kDa as determined by SDS-PAGE reducing conditions.

[**USAGE**]

Reconstitute in 100mM NaHCO₃, 500mM NaCl (pH8.3) to a concentration of 0.1-1.0 mg/mL. Do not vortex.

[**STORAGE AND STABILITY**]

Storage: Avoid repeated freeze/thaw cycles.

Store at 2-8°C for one month.

Aliquot and store at -80°C for 12 months.

Stability Test: The thermal stability is described by the loss rate. The loss rate was determined by accelerated thermal degradation test, that is, incubate the protein at 37°C for 48h, and no obvious degradation and precipitation were observed. The loss rate is less than 5% within the expiration date under appropriate storage condition.

[SEQUENCE]

```

                KPFFS PSHTALKNMM LKDMEDTDDD DNDDDDNSLF
PTKEPVNPF PFDFLPTCPF GCQCYSRVVH CSDLGLTSVP NNIPFDTRMV
DLQNNKIKEI KENDFKGLTS LYALILNNNK LTKIHPKTFL TTKKLRRLYL
SHNQLSEIPL NLPKSLAELR IHDNKVKKIQ KDTFKGMNAL HVLEMSANPL
ENNGIEPGAF EGVTVFHIRI AEAKLTSIPK GLPPTLLELH LDFNKISTVE
LEDLKRYREL QRLGLGNNRI TDIENGTAN IPRVREIHLE HNKLLKIPSG
LQELKYLQII FLHYSIAKV GVNDFCPTVP KMKKSLYSAI SLFNNPMKYW
EIQPATFRCV LGRMSVQLGN VGK
    
```

[IDENTIFICATION]

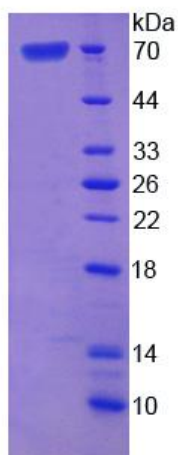


Figure 1. SDS-PAGE