

**RPE806Hu01 10µg**  
**Recombinant Glutamate Receptor,**  
**Ionotropic, N-Methyl-D-Aspartate 2A (GRIN2A)**  
**Organism Species: Homo sapiens (Human)**  
***Instruction manual***

FOR IN VITRO USE AND RESEARCH USE ONLY  
NOT FOR USE IN CLINICAL DIAGNOSTIC PROCEDURES

---

---

11th Edition (Revised in May, 2016)

## **[ PROPERTIES ]**

**Source:** Prokaryotic expression.

**Host:** *E. coli*

**Residues:** Pro31~Ala555

**Tags:** N-terminal His-Tag

**Tissue Specificity:** Cerebellum, Brain.

**Subcellular Location:** Cell membrane; Multi-pass membrane protein. Cell junction.

**Purity:** >85%

**Traits:** Freeze-dried powder

**Buffer formulation:** 20mM Tris, 150mM NaCl, pH8.0, containing 1mM EDTA, 1mM DTT, 0.01% sarcosyl, 5%Trehalose and Proclin300.

**Original Concentration:** 200ug/mL

**Applications:** SDS-PAGE; WB; ELISA; IP; CoIP; Purification; Amine Reactive Labeling.

(May be suitable for use in other assays to be determined by the end user.)

**Predicted isoelectric point:** 5.3

**Predicted Molecular Mass:** 62.5kDa

**Accurate Molecular Mass:** 63kDa as determined by SDS-PAGE reducing conditions.

## [ USAGE ]

Reconstitute in 20mM Tris, 150mM NaCl (pH8.0) to a concentration of 0.1-1.0 mg/mL. Do not vortex.

## [ STORAGE AND STABILITY ]

**Storage:** Avoid repeated freeze/thaw cycles.

Store at 2-8°C for one month.

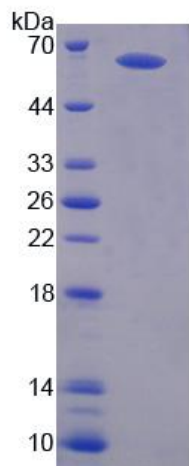
Aliquot and store at -80°C for 12 months.

**Stability Test:** The thermal stability is described by the loss rate. The loss rate was determined by accelerated thermal degradation test, that is, incubate the protein at 37°C for 48h, and no obvious degradation and precipitation were observed. The loss rate is less than 5% within the expiration date under appropriate storage condition.

## [ SEQUENCE ]

```
PPALNIAVML GSHSDVTERE
LRTLWGPEQA AGLPLDVNVV ALLMNRTDPK SLITHVCDLM SGARIHGLVF
GDDTDQEAVA QMLDFISSHT FVPILGIHGG ASMIMADKDP TSTFFQFGAS
IQQQATVMLK IMQDYDWHVF SLVTTIFPGY REFISFVKTT VDNSFVGWDM
QNVTILDTSF EDAKTQVQLK KIHSSVILLY CSKDEAVLIL SEARSLGLTG
YDFFWIVPSL VSGNTELIPK EFPSGLISVS YDDWDYSLEA RVRDGIGILT
TAASSMLEKF SYIPEAKASC YGQMERPEVP MHTLHPFMVN VTWDGKDLSF
TEEGYQVHPR LVVIVLNKDR EWEKVGKVEN HTLSLRHAVW PRYKSFSDCE
PDDNHLIIVT LEEAPFVIVE DIDPLTETCV RNTVPCRKFV KINNSTNEGM
NVKKCKGFC IDILKCLSRT VKFTYDLYLV TNGKHGKKVN NVWNGMIGEV
VYQRAVMAVG SLTINEERSE VVDFSVPFVE TGISVMVSRS NGTVSPSAFL
EPFSA
```

[ **IDENTIFICATION** ]



**Figure 1. SDS-PAGE**