

**rP80251Hu01 100µg**  
**B-Cell CLL/Lymphoma 2 Like Protein 2 (Bcl2L2)**

**Organism: Homo sapiens (Human)**

***Instruction manual***

FOR IN VITRO USE AND RESEARCH USE ONLY  
NOT FOR USE IN CLINICAL DIAGNOSTIC PROCEDURES

7th Edition (Revised in May, 2013)

**[ PROPERTIES ]**

**Residues:** Ala2~Lys193 (Accession # Q92843),  
with N-terminal His-Tag.

**Host:** *E. coli*

**Subcellular Location:** Mitochondrion membrane;  
Peripheral membrane protein.

**Purity:** >95%

**Endotoxin Level:** <1.0EU per 1µg  
(determined by the LAL method).

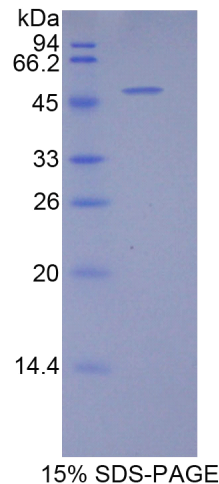
**Formulation:** Supplied as lyophilized form in PBS,  
pH7.4, containing 5% sucrose, 0.01% sarcosyl.

**Predicted isoelectric point:** 6.0

**Predicted Molecular Mass:** 47.7kDa

**Applications:** SDS-PAGE; WB; ELISA; IP.

(May be suitable for use in other assays to be determined by the end user.)



## [ USAGE ]

Reconstitute in sterile PBS, pH7.2-pH7.4.

## [ STORAGE AND STABILITY ]

**Storage: Avoid repeated freeze/thaw cycles.**

Store at 2-8°C for one month.

Aliquot and store at -80°C for 12 months.

**Stability Test:** The thermal stability is described by the loss rate of the target protein. The loss rate was determined by accelerated thermal degradation test, that is, incubate the protein at 37°C for 48h, and no obvious degradation and precipitation were observed. (Referring from China Biological Products Standard, which was calculated by the Arrhenius equation.) The loss of this protein is less than 5% within the expiration date under appropriate storage condition.

## [ SEQUENCES ]

The target protein is fused with N-terminal His-Tag, its sequence is listed below.

MRNKKFELGL EFPNLPYYID GDVKLTQSMA IIRYIADKHN MLGGCPKERA EISMLEGAVL  
DIRYGVSRIA YSKDFETLKV DFLSKLPEML KMFEDRLCHK TYLNGDHVTH PDFMLYDALD  
VVLYMDPMCL DAFPKLVCFK KRIEAIQID KYLKSSKYIA WPLQGQWQATF GGGDHPKSD  
GSTSGSGHHH HHHSAGLVPR GSTAIGMKET AAKFERQHM DSPDLGTLEV  
LFQGPLGSEF-ATPASAPDT RALVADFGY KLRQKGYVCG AGPGEGPAAD PLHQAMRAAG  
DEFETFRRT FSDLAAQLHV TPGSAQQRFT QVSDelfQGG PNWGRLVAFF VFGAALCAES  
VNKEMEPLVGQVQEWVAYL ETQLADWIHS SGGWAEFTAL YGDGALEEAR  
RLREGNWASV RTVLTGAVAL GALVTGGAFF ASK