

## Phospho-Tuberin/TSC2 (Ser939) Ab

Cat.#: AF2431	Concn.: 1mg/ml	Mol.Wt.: 200kDa
Size: 100ul,200ul	Source: Rabbit	Clonality: Polyclonal

**Application:** WB 1:500-1:2000, IHC 1:50-1:200

**Reactivity:** Human,Mouse,Rat

**Purification:** The Ab is from purified rabbit serum by affinity purification via sequential chromatography on phospho- and non-phospho-peptide affinity columns.

**Specificity:** Phospho-Tuberin/TSC2 (Ser939) Ab detects endogenous levels of Tuberin/TSC2.

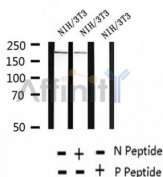
**Immunogen:** A synthesized peptide derived from human Tuberin/TSC2 around the phosphorylation site of Ser939.

**Uniprot:** P49815

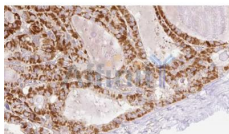
**Subcellular Location:** Cytoplasm. Membrane. At steady state found in association with membranes.

**Tissue Specificity:** Liver, brain, heart, lymphocytes, fibroblasts, biliary epithelium, pancreas, skeletal muscle, kidney, lung and placenta.

**Storage Condition and Buffer:** Rabbit IgG in phosphate buffered saline , pH 7.4, 150mM NaCl, 0.02% sodium azide and 50% glycerol.Store at -20 °C.Stable for 12 months from date of receipt



Western blot analysis of extracts of NIH/3T3 cells, using Phospho-Tuberin/TSC2 (Ser939) Ab.



AF2431 at 1/100 staining Human thyroid cancer tissue by IHC-P. The sample was formaldehyde fixed and a heat mediated antigen retrieval step in citrate buffer was performed. The sample was then blocked and incubated with the Ab for 1.5 hours at 22°C. An HRP conjugated goat anti-rabbit Ab was used as the secondary.

**IMPORTANT:** For western blot, incubate membrane with diluted Ab in 5% w/v milk, 1X TBS, 0.1% Tween@20 at 4°C with gentle shaking, overnight.

For Research Use Only. Not for use in diagnostic and therapeutic procedures. Not for resale without express authorization.