

## Phospho-DKK1(Ser140) Ab

Cat.#: AF4300	Concn.: 1mg/ml	Mol.Wt.: 28-40kDa
Size: 50ul,100ul,200ul	Source: Rabbit	Clonality: Polyclonal

**Application:** WB 1:500-1:2000

**Reactivity:** Human,Mouse

**Purification:** The Ab is from purified rabbit serum by affinity purification via sequential chromatography on phospho- and non-phospho-peptide affinity columns.

**Specificity:** Phospho-DKK1(Ser140) Ab detects endogenous levels of DKK1 only when phosphorylated at Ser140

**Immunogen:** A synthesized peptide derived from human DKK1 around the phosphorylation site of Ser140

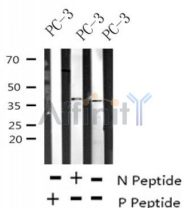
**Uniprot:** O94907

**Subcellular Location:** Secreted.

**Tissue Specificity:** Placenta.

**Similarity:** The C-terminal cysteine-rich domain mediates interaction with LRP5 and LRP6.Belongs to the dickkopf family.

**Storage Condition and Buffer:** Rabbit IgG in phosphate buffered saline , pH 7.4, 150mM NaCl, 0.02% sodium azide and 50% glycerol.Store at -20 °C.Stable for 12 months from date of receipt



Western blot analysis of Phospho-DKK1(Ser140) in lysates of PC-3 , using Phospho-DKK1(Ser140) Ab(AF4300).

**IMPORTANT:** For western blot, incubate membrane with diluted Ab in 5% w/v milk , 1X TBS, 0.1% Tween@20 at 4°C with gentle shaking, overnight.

For Research Use Only. Not for use in diagnostic and therapeutic procedures. Not for resale without express authorization.