

Phospho-LC3B(Thr29) Ab

Cat.#: AF4350 Concn.: 1mg/ml Mol.Wt.: 14kDa, 16kDa
 Size: 50ul,100ul,200ul Source: Rabbit Clonality: Polyclonal

Application: WB 1:500-1:2000

Reactivity: Human,Mouse,Rat

Purification: The Ab is from purified rabbit serum by affinity purification via sequential chromatography on phospho- and non-phospho-peptide affinity columns.

Specificity: Phospho-LC3B(Thr29) Ab detects endogenous levels of LC3B only when phosphorylated at Thr29

Immunogen: A synthesized peptide derived from human LC3B around the phosphorylation site of Thr29

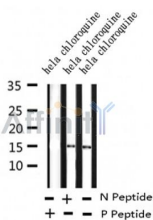
Uniprot: Q9GZQ8

Subcellular Location: Cytoplasm > cytoskeleton. Endomembrane system. Cytoplasmic vesicle > autophagosome membrane. LC3-II binds to the autophagic membranes.

Tissue Specificity: Most abundant in heart, brain, skeletal muscle and testis. Little expression observed in liver.

Similarity: Belongs to the ATG8 family.

Storage Condition and Buffer: Rabbit IgG in phosphate buffered saline , pH 7.4, 150mM NaCl, 0.02% sodium azide and 50% glycerol.Store at -20 °C.Stable for 12 months from date of receipt



Western blot analysis of Phospho-LC3B(Thr29) in lysates of hela overnight chloroquine (50 uM), using Phospho-LC3B(Thr29) Ab(AF4350).

IMPORTANT: For western blot, incubate membrane with diluted Ab in 5% w/v milk , 1X TBS, 0.1% Tween@20 at 4°C with gentle shaking, overnight.

For Research Use Only. Not for use in diagnostic and therapeutic procedures. Not for resale without express authorization.