

## Phospho-PFKFB2 (Ser483) Ab

Cat.#: AF4385	Concn.: 1mg/ml	Mol.Wt.: 58kDa
Size: 50ul,100ul,200ul	Source: Rabbit	Clonality: Polyclonal

**Application:** WB 1:500-1:2000

**Reactivity:** Rat,Human,Mouse

**Purification:** The Ab is from purified rabbit serum by affinity purification via sequential chromatography on phospho- and non-phospho-peptide affinity columns.

**Specificity:** Phospho-PFKFB2 (Ser483) Ab detects endogenous levels of PFKFB2 only when phosphorylated at Ser483

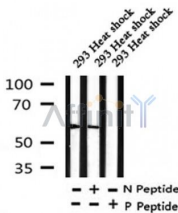
**Immunogen:** A synthesized peptide derived from human PFKFB2 around the phosphorylation site of Ser483

**Uniprot:** O60825

**Tissue Specificity:** Heart.

**Similarity:** In the C-terminal section; belongs to the phosphoglycerate mutase family.

**Storage Condition and Buffer:** Rabbit IgG in phosphate buffered saline , pH 7.4, 150mM NaCl, 0.02% sodium azide and 50% glycerol.Store at -20 °C.Stable for 12 months from date of receipt



Western blot analysis of Phospho-PFKFB2 (Ser483) in lysates of 293 Heat shock, using Phospho-PFKFB2 (Ser483) Ab(AF4385).

**IMPORTANT:** For western blot, incubate membrane with diluted Ab in 5% w/v milk , 1X TBS, 0.1% Tween@20 at 4°C with gentle shaking, overnight.

For Research Use Only. Not for use in diagnostic and therapeutic procedures. Not for resale without express authorization.