

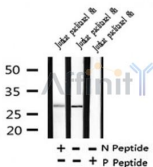
## Phospho-Bcl-2 (Thr56) Ab

Cat.#: AF4400  
 Size: 50ul,100ul,200ul

Concn.: 1mg/ml  
 Source: Rabbit

Mol.Wt.: 28kDa  
 Clonality: Polyclonal

Application:	WB 1:500-1:2000
Reactivity:	Human
Purification:	The Ab is from purified rabbit serum by affinity purification via sequential chromatography on phospho- and non-phospho-peptide affinity columns.
Specificity:	Phospho-Bcl-2 (Thr56) Ab detects endogenous levels of Bcl-2 only when phosphorylated at Thr56
Immunogen:	A synthesized peptide derived from human Bcl-2 around the phosphorylation site of Thr56
Uniprot:	P10415
Subcellular Location:	Mitochondrion outer membrane. Nucleus membrane. Endoplasmic reticulum membrane.
Tissue Specificity:	Expressed in a variety of tissues.
Similarity:	BH1 and BH2 domains are required for the interaction with BAX and for anti-apoptotic activity.The BH4 motif is required for anti-apoptotic activity and for interaction with RAF1 and EGLN3.The loop between motifs BH4 and BH3 is required for the interaction with NLRP1.Belongs to the Bcl-2 family.
Storage Condition and Buffer:	Rabbit IgG in phosphate buffered saline , pH 7.4, 150mM NaCl, 0.02% sodium azide and 50% glycerol.Store at -20 °C.Stable for 12 months from date of receipt



Western blot analysis of Phospho-Bcl-2 (Thr56) in lysates of Jurkat paclitaxel 8h, using Phospho-Bcl-2 (Thr56) Ab(AF4400).

**IMPORTANT:** For western blot, incubate membrane with diluted Ab in 5% w/v milk , 1X TBS, 0.1% Tween@20 at 4°C with gentle shaking, overnight.



**Affinity Biosciences**  
website: [www.affbiotech.com](http://www.affbiotech.com)  
order: [order@affbiotech.com](mailto:order@affbiotech.com)

---

procedures. Not for resale without express authorization.