

Phospho-Ras-GRF1 (Ser927) Ab

Cat.#: AF4414	Concn.: 1mg/ml	Mol.Wt.: 155kDa
Size: 50ul,100ul,200ul	Source: Rabbit	Clonality: Polyclonal

Application: WB 1:500-1:2000

Reactivity: Human

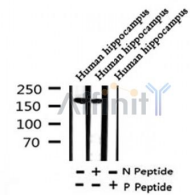
Purification: The Ab is from purified rabbit serum by affinity purification via sequential chromatography on phospho- and non-phospho-peptide affinity columns.

Specificity: Phospho-Ras-GRF1 (Ser927) Ab detects endogenous levels of Ras-GRF1 only when phosphorylated at Ser927

Immunogen: A synthesized peptide derived from human Ras-GRF1 around the phosphorylation site of Ser927

Uniprot: P27671

Storage Condition and Buffer: Rabbit IgG in phosphate buffered saline , pH 7.4, 150mM NaCl, 0.02% sodium azide and 50% glycerol.Store at -20 °C.Stable for 12 months from date of receipt



Western blot analysis of Phospho-Ras-GRF1 (Ser927) in lysates of Human hippocampus, using Phospho-Ras-GRF1 (Ser927) Ab(AF4414).

IMPORTANT: For western blot, incubate membrane with diluted Ab in 5% w/v milk , 1X TBS, 0.1% Tween@20 at 4°C with gentle shaking, overnight.

For Research Use Only. Not for use in diagnostic and therapeutic procedures. Not for resale without express authorization.