

## Phospho-Tuberin/TSC2 (Ser1387) Ab

Cat.#: AF4436	Concn.: 1mg/ml	Mol.Wt.: 200kDa
Size: 50ul,100ul,200ul	Source: Rabbit	Clonality: Polyclonal

**Application:** WB 1:500-1:2000

**Reactivity:** Human,Mouse,Rat

**Purification:** The Ab is from purified rabbit serum by affinity purification via sequential chromatography on phospho- and non-phospho-peptide affinity columns.

**Specificity:** Phospho-Tuberin/TSC2 (Ser1387) Ab detects endogenous levels of Tuberin/TSC2 only when phosphorylated at Ser1387

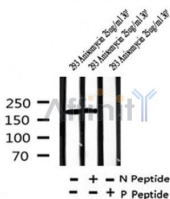
**Immunogen:** A synthesized peptide derived from human Tuberin/TSC2 around the phosphorylation site of Ser1387

**Uniprot:** P49815

**Subcellular Location:** Cytoplasm. Membrane. At steady state found in association with membranes.

**Tissue Specificity:** Liver, brain, heart, lymphocytes, fibroblasts, biliary epithelium, pancreas, skeletal muscle, kidney, lung and placenta.

**Storage Condition and Buffer:** Rabbit IgG in phosphate buffered saline , pH 7.4, 150mM NaCl, 0.02% sodium azide and 50% glycerol.Store at -20 °C.Stable for 12 months from date of receipt



Western blot analysis of Phospho-Tuberin/TSC2 (Ser1387) in lysates of 293 Anisomycin 25ug/ml 30', using Phospho-Tuberin/TSC2 (Ser1387) Ab(AF4436).

**IMPORTANT:** For western blot, incubate membrane with diluted Ab in 5% w/v milk , 1X TBS, 0.1% Tween@20 at 4°C with gentle shaking, overnight.

For Research Use Only. Not for use in diagnostic and therapeutic procedures. Not for resale without express authorization.