

Phospho-CDC20 (Ser51) Ab

Cat.#: AF4459	Concn.: 1mg/ml	Mol.Wt.: 50kDa
Size: 50ul,100ul,200ul	Source: Rabbit	Clonality: Polyclonal

Application: WB 1:500-1:2000

Reactivity: Human,Mouse,Rat

Purification: The Ab is from purified rabbit serum by affinity purification via sequential chromatography on phospho- and non-phospho-peptide affinity columns.

Specificity: Phospho-CDC20 (Ser51) Ab detects endogenous levels of CDC20 only when phosphorylated at Ser51

Immunogen: A synthesized peptide derived from human CDC20 around the phosphorylation site of Ser51

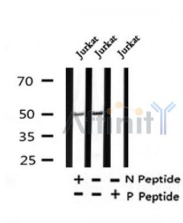
Uniprot: Q12834

Subcellular Location: Cytoskeleton;

Tissue Specificity: Synthesis is initiated at G1/S, protein level peaks in M phase and protein is abruptly degraded at M/G1 transition.

Similarity: Belongs to the WD repeat CDC20/Fizzy family.

Storage Condition and Buffer: Rabbit IgG in phosphate buffered saline , pH 7.4, 150mM NaCl, 0.02% sodium azide and 50% glycerol.Store at -20 °C.Stable for 12 months from date of receipt



Western blot analysis of Phospho-CDC20 (Ser51) in lysates of Jurkat , using Phospho-CDC20 (Ser51) Ab(AF4459).

IMPORTANT: For western blot, incubate membrane with diluted Ab in 5% w/v milk , 1X TBS, 0.1% Tween@20 at 4°C with gentle shaking, overnight.

For Research Use Only. Not for use in diagnostic and therapeutic procedures. Not for resale without express authorization.