

Phospho-SLP-76 (Tyr145) Ab

Cat.#: AF4462	Concn.: 1mg/ml	Mol.Wt.: 76kDa
Size: 50ul,100ul,200ul	Source: Rabbit	Clonality: Polyclonal

Application: WB 1:500-1:2000

Reactivity: Human,Mouse,Rat

Purification: The Ab is from purified rabbit serum by affinity purification via sequential chromatography on phospho- and non-phospho-peptide affinity columns.

Specificity: Phospho-SLP-76 (Tyr145) Ab detects endogenous levels of SLP-76 only when phosphorylated at Tyr145

Immunogen: A synthesized peptide derived from human SLP-76 around the phosphorylation site of Tyr145

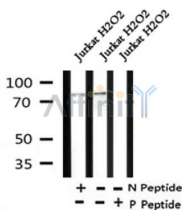
Uniprot: Q13094

Subcellular Location: Cytoplasm.

Tissue Specificity: Highly expressed in spleen, thymus and peripheral blood leukocytes. Highly expressed also in T-cell and monocytic cell lines, expressed at lower level in B-cell lines. Not detected in fibroblast or neuroblastoma cell lines.

Similarity: The SH2 domain mediates interaction with phosphorylated CD6 (PubMed:16914752). The SH2 domain mediates interaction with SHB (PubMed:12084069).

Storage Condition and Buffer: Rabbit IgG in phosphate buffered saline , pH 7.4, 150mM NaCl, 0.02% sodium azide and 50% glycerol.Store at -20 °C.Stable for 12 months from date of receipt



Western blot analysis of Phospho-SLP-76 (Tyr145) in lysates of Jurkat H2O2, using Phospho-SLP-76 (Tyr145) Ab(AF4462).

IMPORTANT: For western blot, incubate membrane with diluted Ab in 5% w/v milk , 1X TBS, 0.1% Tween@20 at 4°C with gentle shaking, overnight.



Affinity Biosciences
website: www.affbiotech.com
order: order@affbiotech.com

procedures. Not for resale without express authorization.