

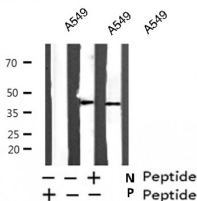
ATF-4 (Phospho-Ser219) Ab

Cat.#: AF5436
 Size: 100ul,200ul

Concn.: 1mg/ml
 Source: Rabbit

Mol.Wt.: 40 kDa
 Clonality: Polyclonal

Application:	WB 1:500-1:2000
Reactivity:	Human,Mouse
Purification:	The Ab is from purified rabbit serum by affinity purification via sequential chromatography on phospho- and non-phospho-peptide affinity columns.
Specificity:	ATF-4 (Phospho-Ser219) Ab detects endogenous levels of total ATF-4 (Phospho-Ser219)
Immunogen:	A synthesized peptide derived from human ATF-4 (Phospho-Ser219)
Uniprot:	P18848
Description:	Transcriptional activator. Binds the cAMP response element (CRE) (consensus: 5'-GTGACGT[AC][AG]-3'), a sequence present in many viral and cellular promoters. Cooperates with FOXO1 in osteoblasts to regulate glucose homeostasis through suppression of beta-cell production and decrease in insulin production
Subcellular Location:	Cytoplasm. Cell membrane. Nucleus. Colocalizes with GABBR1 in hippocampal neuron dendritic membranes.
Similarity:	The BetaTrCP degron motif promotes binding to BTRC when phosphorylated.Belongs to the bZIP family.
Storage Condition and Buffer:	Rabbit IgG in phosphate buffered saline , pH 7.4, 150mM NaCl, 0.02% sodium azide and 50% glycerol.Store at -20 °C.Stable for 12 months from date of receipt



Western blot analysis of ATF-4 (Phospho-Ser219) expression in A549 cells

IMPORTANT: For western blot, incubate membrane with diluted Ab in 5% w/v milk , 1X TBS, 0.1% Tween@20 at 4°C with gentle shaking, overnight.



Affinity Biosciences

website:www.affbiotech.com

order:order@affbiotech.com

For Research Use Only. Not for use in diagnostic and therapeutic procedures. Not for resale without express authorization.