

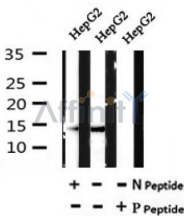
## Phospho-FABP1(Ser11) Ab

Cat.#: AF7055  
 Size: 50ul,100ul,200ul

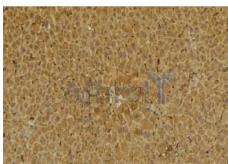
Concn.: 1mg/ml  
 Source: Rabbit

Mol.Wt.: 14kDa  
 Clonality: Polyclonal

- Application:** WB 1:500-1:2000, IHC 1:50-1:200
- Reactivity:** Human,Mouse,Rat
- Purification:** The Ab is from purified rabbit serum by affinity purification via sequential chromatography on phospho- and non-phospho-peptide affinity columns.
- Specificity:** Phospho-FABP1(Ser11) Ab detects endogenous levels of FABP1 only when phosphorylated at Ser11
- Immunogen:** A synthesized peptide derived from human FABP1 around the phosphorylation site of Ser11
- Uniprot:** P07148
- Subcellular Location:** Cytoplasm.
- Similarity:** Forms a beta-barrel structure that accommodates hydrophobic ligands in its interior.Belongs to the calycin superfamily. Fatty-acid binding protein (FABP) family.
- Storage Condition and Buffer:** Rabbit IgG in phosphate buffered saline , pH 7.4, 150mM NaCl, 0.02% sodium azide and 50% glycerol.Store at -20 °C.Stable for 12 months from date of receipt



Western blot analysis of Phospho-FABP1(Ser11) in lysates of HepG2 , using Phospho-FABP1(Ser11) Ab(AF7055).



AF7055 at 1/100 staining rat liver tissue sections by IHC-P. The tissue was formaldehyde fixed and a heat mediated antigen retrieval step in citrate buffer was performed. The tissue was then blocked and incubated with the Ab for 1.5 hours at 22°C. An HRP conjugated goat anti-rabbit Ab was used as the secondary.

**IMPORTANT:** For western blot, incubate membrane with diluted Ab in 5% w/v milk, 1X TBS, 0.1% Tween@20 at 4°C with gentle shaking, overnight.

For Research Use Only. Not for use in diagnostic and therapeutic procedures. Not for resale without express authorization.