

Phospho-CDC34(Ser71) Ab

Cat.#: AF7090	Concn.: 1mg/ml	Mol.Wt.: 26kDa
Size: 50ul,100ul,200ul	Source: Rabbit	Clonality: Polyclonal

Application: WB 1:500-1:2000

Reactivity: Human,Mouse,Rat

Purification: The Ab is from purified rabbit serum by affinity purification via sequential chromatography on phospho- and non-phospho-peptide affinity columns.

Specificity: Phospho-CDC34(Ser71) Ab detects endogenous levels of CDC34 only when phosphorylated at Ser71

Immunogen: A synthesized peptide derived from human CDC34 around the phosphorylation site of Ser71

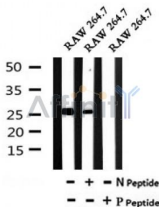
Uniprot: P49427

Subcellular Location: Nucleus;

Tissue Specificity: Expressed in testes during spermatogenesis to regulate repression of cAMP-induced transcription.

Similarity: The C-terminal acidic tail is required for nuclear localization and is involved in the binding to SCF E3 ligase complexes, and more specifically with the CUL1 subunit.Belongs to the ubiquitin-conjugating enzyme family.

Storage Condition and Buffer: Rabbit IgG in phosphate buffered saline , pH 7.4, 150mM NaCl, 0.02% sodium azide and 50% glycerol.Store at -20 °C.Stable for 12 months from date of receipt



Western blot analysis of Phospho-CDC34(Ser71) in lysates of RAW 264.7 , using Phospho-CDC34(Ser71) Ab(AF7090).

IMPORTANT: For western blot, incubate membrane with diluted Ab in 5% w/v milk , 1X TBS, 0.1% Tween@20 at 4°C with gentle shaking, overnight.