

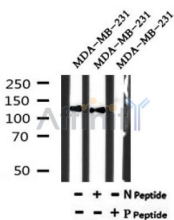
Phospho-HER2 (Tyr1005) Ab

Cat.#: AF7179
Size: 50ul,100ul,200ul

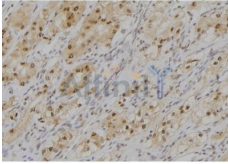
Concn.: 1mg/ml
Source: Rabbit

Mol.Wt.: 138kDa
Clonality: Polyclonal

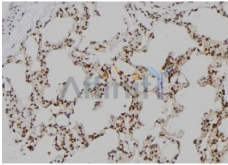
Application:	WB 1:500-1:2000, IHC 1:50-1:200
Reactivity:	Human,Mouse,Rat
Purification:	The Ab is from purified rabbit serum by affinity purification via sequential chromatography on phospho- and non-phospho-peptide affinity columns.
Specificity:	Phospho-HER2 (Tyr1005) Ab detects endogenous levels of HER2 only when phosphorylated at Tyr1005
Immunogen:	A synthesized peptide derived from human HER2 around the phosphorylation site of Tyr1005
Uniprot:	P04626
Subcellular Location:	Cytoplasm. Nucleus and Cell membrane. Cytoplasm, perinuclear region. Nucleus. Translocation to the nucleus requires endocytosis, probably endosomal sorting and is mediated by importin beta-1/KPNB1.
Tissue Specificity:	Expressed in a variety of tumor tissues including primary breast tumors and tumors from small bowel, esophagus, kidney and mouth.
Similarity:	Belongs to the protein kinase superfamily. Tyr protein kinase family. EGF receptor subfamily.
Storage Condition and Buffer:	Rabbit IgG in phosphate buffered saline , pH 7.4, 150mM NaCl, 0.02% sodium azide and 50% glycerol.Store at -20 °C.Stable for 12 months from date of receipt



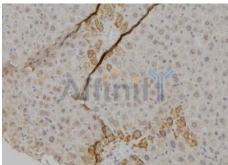
Western blot analysis of Phospho-HER2 (Tyr1005) in lysates of MDA-MB-231, using Phospho-HER2 (Tyr1005) Ab(AF7179).



AF7179 at 1/100 staining human kidney tissue sections by IHC-P. The tissue was formaldehyde fixed and a heat mediated antigen retrieval step in citrate buffer was performed. The tissue was then blocked and incubated with the Ab for 1.5 hours at 22°C. An HRP conjugated goat anti-rabbit Ab was used as the secondary.



AF7179 at 1/100 staining rat lung tissue sections by IHC-P. The tissue was formaldehyde fixed and a heat mediated antigen retrieval step in citrate buffer was performed. The tissue was then blocked and incubated with the Ab for 1.5 hours at 22°C. An HRP conjugated goat anti-rabbit Ab was used as the secondary.



AF7179 at 1/100 staining mouse liver tissue sections by IHC-P. The tissue was formaldehyde fixed and a heat mediated antigen retrieval step in citrate buffer was performed. The tissue was then blocked and incubated with the Ab for 1.5 hours at 22°C. An HRP conjugated goat anti-rabbit Ab was used as the secondary.

IMPORTANT: For western blot, incubate membrane with diluted Ab in 5% w/v milk , 1X TBS, 0.1% Tween@20 at 4°C with gentle shaking, overnight.

For Research Use Only. Not for use in diagnostic and therapeutic procedures. Not for resale without express authorization.