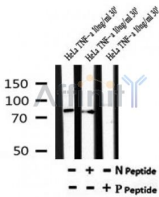


Phospho-HSP90B (Ser226) Ab

Cat.#: AF7210	Concn.: 1mg/ml	Mol.Wt.: 84kDa
Size: 50ul,100ul,200ul	Source: Rabbit	Clonality: Polyclonal

Application:	WB 1:500-1:2000
Reactivity:	Human,Mouse,Rat
Purification:	The Ab is from purified rabbit serum by affinity purification via sequential chromatography on phospho- and non-phospho-peptide affinity columns.
Specificity:	Phospho-HSP90B (Ser226) Ab detects endogenous levels of HSP90B only when phosphorylated at Ser226
Immunogen:	A synthesized peptide derived from human HSP90B around the phosphorylation site of Ser226
Uniprot:	P08238
Subcellular Location:	Cytoplasm. Melanosome. Identified by mass spectrometry in melanosome fractions from stage I to stage IV.
Tissue Specificity:	By heat shock.
Similarity:	The TPR repeat-binding motif mediates interaction with TPR repeat-containing proteins.Belongs to the heat shock protein 90 family.
Storage Condition and Buffer:	Rabbit IgG in phosphate buffered saline , pH 7.4, 150mM NaCl, 0.02% sodium azide and 50% glycerol.Store at -20 °C.Stable for 12 months from date of receipt



Western blot analysis of Phospho-HSP90B (Ser226) in lysates of HeLa TNF-a 10ng/ml 30', using Phospho-HSP90B (Ser226) Ab(AF7210).

IMPORTANT: For western blot, incubate membrane with diluted Ab in 5% w/v milk , 1X TBS, 0.1% Tween@20 at 4°C with gentle shaking, overnight.

For Research Use Only. Not for use in diagnostic and therapeutic procedures. Not for resale without express authorization.