

## Phospho-A-RAF (Ser582) Ab

Cat.#: AF7213	Concn.: 1mg/ml	Mol.Wt.: 68kDa
Size: 50ul,100ul,200ul	Source: Rabbit	Clonality: Polyclonal

**Application:** WB 1:500-1:2000

**Reactivity:** Human,Mouse,Rat

**Purification:** The Ab is from purified rabbit serum by affinity purification via sequential chromatography on phospho- and non-phospho-peptide affinity columns.

**Specificity:** Phospho-A-RAF (Ser582) Ab detects endogenous levels of A-RAF only when phosphorylated at Ser582

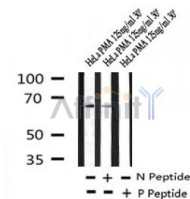
**Immunogen:** A synthesized peptide derived from human A-RAF around the phosphorylation site of Ser582

**Uniprot:** P10398

**Tissue Specificity:** Predominantly in urogenital tissues.

**Similarity:** Belongs to the protein kinase superfamily. TKL Ser/Thr protein kinase family. RAF subfamily.

**Storage Condition and Buffer:** Rabbit IgG in phosphate buffered saline , pH 7.4, 150mM NaCl, 0.02% sodium azide and 50% glycerol.Store at -20 °C.Stable for 12 months from date of receipt



Western blot analysis of Phospho-A-RAF (Ser582) in lysates of HeLa , using Phospho-A-RAF (Ser582) Ab(AF7213).

**IMPORTANT:** For western blot, incubate membrane with diluted Ab in 5% w/v milk , 1X TBS, 0.1% Tween@20 at 4°C with gentle shaking, overnight.

For Research Use Only. Not for use in diagnostic and therapeutic procedures. Not for resale without express authorization.