

Phospho-A-RAF (Thr214) Ab

Cat.#: AF7214	Concn.: 1mg/ml	Mol.Wt.: 68kDa
Size: 50ul,100ul,200ul	Source: Rabbit	Clonality: Polyclonal

Application: WB 1:500-1:2000

Reactivity: Human,Mouse,Rat

Purification: The Ab is from purified rabbit serum by affinity purification via sequential chromatography on phospho- and non-phospho-peptide affinity columns.

Specificity: Phospho-A-RAF (Thr214) Ab detects endogenous levels of A-RAF only when phosphorylated at Thr214

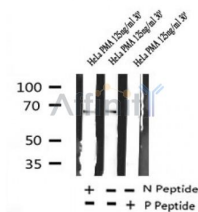
Immunogen: A synthesized peptide derived from human A-RAF around the phosphorylation site of Thr214

Uniprot: P10398

Tissue Specificity: Predominantly in urogenital tissues.

Similarity: Belongs to the protein kinase superfamily. TKL Ser/Thr protein kinase family. RAF subfamily.

Storage Condition and Buffer: Rabbit IgG in phosphate buffered saline , pH 7.4, 150mM NaCl, 0.02% sodium azide and 50% glycerol.Store at -20 °C.Stable for 12 months from date of receipt



Western blot analysis of Phospho-A-RAF (Thr214) in lysates of HeLa , using Phospho-A-RAF (Thr214) Ab(AF7214).

IMPORTANT: For western blot, incubate membrane with diluted Ab in 5% w/v milk , 1X TBS, 0.1% Tween@20 at 4°C with gentle shaking, overnight.

For Research Use Only. Not for use in diagnostic and therapeutic procedures. Not for resale without express authorization.