

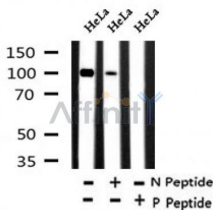
Phospho-CTNNA1 (Tyr177) Ab

Cat.#: AF7295
Size: 50ul,100ul,200ul

Concn.: 1mg/ml
Source: Rabbit

Mol.Wt.: 100kd
Clonality: Polyclonal

Application:	WB 1:500-1:2000
Reactivity:	Human,Mouse,Rat
Purification:	The Ab is from purified rabbit serum by affinity purification via sequential chromatography on phospho- and non-phospho-peptide affinity columns.
Specificity:	Phospho-CTNNA1 (Tyr177) Ab detects endogenous levels of CTNNA1 only when phosphorylated at Tyr177
Immunogen:	A synthesized peptide derived from human CTNNA1 around the phosphorylation site of Tyr177
Uniprot:	P35221
Subcellular Location:	Cell membrane and Cytoplasm > cytoskeleton. Cell junction > adherens junction. Cell membrane. Cell junction. Found at cell-cell boundaries and probably at cell-matrix boundaries.
Tissue Specificity:	Expressed ubiquitously in normal tissues.
Similarity:	Belongs to the vinculin/alpha-catenin family.
Storage Condition and Buffer:	Rabbit IgG in phosphate buffered saline , pH 7.4, 150mM NaCl, 0.02% sodium azide and 50% glycerol.Store at -20 °C.Stable for 12 months from date of receipt



Western blot analysis of Phospho-CTNNA1 (Tyr177) in lysates of HeLa , using Phospho-CTNNA1 (Tyr177) Ab(AF7295).

IMPORTANT: For western blot, incubate membrane with diluted Ab in 5% w/v milk , 1X TBS, 0.1% Tween@20 at 4°C with gentle shaking, overnight.

For Research Use Only. Not for use in diagnostic and therapeutic procedures. Not for resale without express authorization.