

## Phospho-WASP (Tyr291) Ab

Cat.#: AF7304	Concn.: 1mg/ml	Mol.Wt.: 53kd
Size: 50ul,100ul,200ul	Source: Rabbit	Clonality: Polyclonal

**Application:** WB 1:500-1:2000, IHC 1:50-1:200

**Reactivity:** Human, Mouse

**Purification:** The Ab is from purified rabbit serum by affinity purification via sequential chromatography on phospho- and non-phospho-peptide affinity columns.

**Specificity:** Phospho-WASP (Tyr291) Ab detects endogenous levels of WASP only when phosphorylated at Tyr291

**Immunogen:** A synthesized peptide derived from human WASP around the phosphorylation site of Tyr291

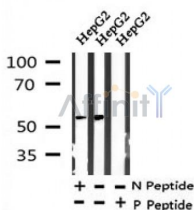
**Uniprot:** P42768

**Subcellular Location:** Cytoplasm > cytoskeleton.

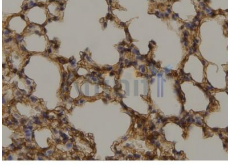
**Tissue Specificity:** Expressed predominantly in the thymus. Also found, to a much lesser extent, in the spleen.

**Similarity:** The WH1 (Wasp homology 1) domain may bind a Pro-rich ligand. The CRIB (Cdc42/Rac-interactive-binding) region binds to the C-terminal WH2 domain in the autoinhibited state of the protein. Binding of Rho-type GTPases to the CRIB induces a conformation change and leads to activation.

**Storage Condition and Buffer:** Rabbit IgG in phosphate buffered saline , pH 7.4, 150mM NaCl, 0.02% sodium azide and 50% glycerol. Store at -20 °C. Stable for 12 months from date of receipt



Western blot analysis of Phospho-WASP (Tyr291) in lysates of HepG2, using Phospho-WASP (Tyr291) Ab(AF7304).



AF7304 at 1/100 staining mouse lung tissue sections by IHC-P. The tissue was formaldehyde fixed and a heat mediated antigen retrieval step in citrate buffer was performed. The tissue was then blocked and incubated with the Ab for 1.5 hours at 22°C. An HRP conjugated goat anti-rabbit Ab was used as the secondary.

**IMPORTANT:** For western blot, incubate membrane with diluted Ab in 5% w/v milk , 1X TBS, 0.1% Tween@20 at 4°C with gentle shaking, overnight.

For Research Use Only. Not for use in diagnostic and therapeutic procedures. Not for resale without express authorization.