

Phospho-Arrestin β 1(Tyr173) Ab

Cat.#: AF7310	Concn.: 1mg/ml	Mol.Wt.: 50kDa
Size: 50ul,100ul,200ul	Source: Rabbit	Clonality: Polyclonal

Application: WB 1:500-1:2000

Reactivity: Human,Mouse,Rat

Purification: The Ab is from purified rabbit serum by affinity purification via sequential chromatography on phospho- and non-phospho-peptide affinity columns.

Specificity: Phospho-beta-Arrestin 1 (Tyr173) Ab detects endogenous levels of beta-Arrestin 1 only when phosphorylated at Tyr173

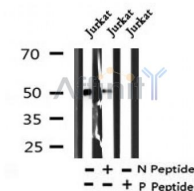
Immunogen: A synthesized peptide derived from human beta-Arrestin 1 around the phosphorylation site of Tyr173

Uniprot: P49407

Subcellular Location: Cytoplasm. Nucleus. Cell membrane. Membrane > clathrin-coated pit. Cell projection > pseudopodium. Cytoplasmic vesicle. Translocates to the plasma membrane and colocalizes with antagonist-stimulated GPCRs. The monomeric form is predominantly located in the nucleus. The oligomeric form is located in the cytoplasm. Translocates to the nucleus upon stimulation of OPRD1.

Similarity: The [DE]-X(1,2)-F-X-X-[FL]-X-X-X-R motif mediates interaction the AP-2 complex subunit AP2B1 (By similarity). Binding to phosphorylated GPCRs induces a conformational change that exposes the motif to the surface.The N-terminus binds InsP6 with low affinity.The C-terminus binds InsP6 with high affinity.Belongs to the arrestin family.

Storage Condition and Buffer: Rabbit IgG in phosphate buffered saline , pH 7.4, 150mM NaCl, 0.02% sodium azide and 50% glycerol.Store at -20 °C.Stable for 12 months from date of receipt



Western blot analysis of Phospho -Arrestin 1 (Tyr173) in lysates of Jurkat, using Phospho -Arrestin 1 (Tyr173) Ab(AF7310).

IMPORTANT: For western blot, incubate membrane with diluted Ab in 5% w/v milk, 1X TBS, 0.1% Tween@20 at 4°C with gentle shaking, overnight.

For Research Use Only. Not for use in diagnostic and therapeutic procedures. Not for resale without express authorization.