

Phospho-Rac1/cdc42 (Tyr64) Ab

Cat.#: AF7328
 Size: 50ul,100ul,200ul

Concn.: 1mg/ml
 Source: Rabbit

Mol.Wt.: 28kDa
 Clonality: Polyclonal

Application: WB 1:500-1:2000, IHC 1:50-1:200

Reactivity: Rat,Human,Mouse

Purification: The Ab is from purified rabbit serum by affinity purification via sequential chromatography on phospho- and non-phospho-peptide affinity columns.

Specificity: Phospho-Rac1/cdc42 (Tyr64) Ab detects endogenous levels of Rac1/cdc42 only when phosphorylated at Tyr64

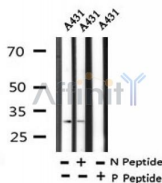
Immunogen: A synthesized peptide derived from human Rac1/cdc42 around the phosphorylation site of Tyr64

Uniprot: P60953

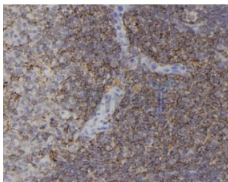
Subcellular Location: Cell membrane.

Similarity: Belongs to the small GTPase superfamily. Rho family. CDC42 subfamily.

Storage Condition and Buffer: Rabbit IgG in phosphate buffered saline , pH 7.4, 150mM NaCl, 0.02% sodium azide and 50% glycerol.Store at -20 °C.Stable for 12 months from date of receipt



Western blot analysis of Phospho-Rac1/cdc42 (Tyr64) in lysates of A431 , using Phospho-Rac1/cdc42 (Tyr64) Ab(AF7328).



AF7328 at 1/100 staining mouse spleen tissue sections by IHC-P. The tissue was formaldehyde fixed and a heat mediated antigen retrieval step in citrate buffer was performed. The tissue was then blocked and incubated with the Ab for 1.5 hours at 22°C. An HRP conjugated goat anti-rabbit Ab was used as the secondary.



Affinity Biosciences

website: www.affbiotech.com

order: order@affbiotech.com

w/v milk , 1X TBS, 0.1% Tween@20 at 4°C with gentle shaking, overnight.

For Research Use Only. Not for use in diagnostic and therapeutic procedures. Not for resale without express authorization.