

Phospho-PSD95 (Ser142) Ab

| | | |
|------------------------|----------------|-----------------------|
| Cat.#: AF7339 | Concn.: 1mg/ml | Mol.Wt.: 105kDa |
| Size: 50ul,100ul,200ul | Source: Rabbit | Clonality: Polyclonal |

Application: WB 1:500-1:2000

Reactivity: Human,Mouse,Rat

Purification: The Ab is from purified rabbit serum by affinity purification via sequential chromatography on phospho- and non-phospho-peptide affinity columns.

Specificity: Phospho-PSD95 (Ser142) Ab detects endogenous levels of PSD95 only when phosphorylated at Ser142

Immunogen: A synthesized peptide derived from human PSD95 around the phosphorylation site of Ser142

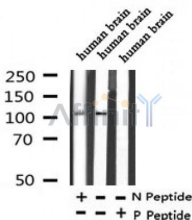
Uniprot: P78352

Subcellular Location: Cell membrane. Cell junction, synapse, postsynaptic cell membrane, postsynaptic density. Cell projection, axon. Cell junction, synapse. High levels in postsynaptic density of neurons in the forebrain. Also in presynaptic region of inhibitory synapses formed by cerebellar basket cells on axon hillocks of Purkinje cells.

Tissue Specificity: Brain.

Similarity: The PDZ domain 3 mediates interaction with ADR1B.The L27 domain near the N-terminus of isoform 2 is required for HGS/HRS-dependent targeting to postsynaptic density.Belongs to the MAGUK family.

Storage Condition and Buffer: Rabbit IgG in phosphate buffered saline , pH 7.4, 150mM NaCl, 0.02% sodium azide and 50% glycerol.Store at -20 °C.Stable for 12 months from date of receipt



Western blot analysis of extracts of human brain tissue sample,using Phospho-PSD95 (Ser142) Ab(AF7339).



Affinity Biosciences

website: www.affbiotech.com

order: order@affbiotech.com

w/v milk , 1X TBS, 0.1% Tween@20 at 4°C with gentle shaking, overnight.

For Research Use Only. Not for use in diagnostic and therapeutic procedures. Not for resale without express authorization.