

Phospho-NT5C (Ser184) Ab

| | | |
|------------------------|----------------|-----------------------|
| Cat.#: AF7422 | Concn.: 1mg/ml | Mol.Wt.: 23kDa |
| Size: 50ul,100ul,200ul | Source: Rabbit | Clonality: Polyclonal |

Application: WB 1:500-1:2000, IHC 1:50-1:200

Reactivity: Human,Mouse,Rat

Purification: The Ab is from purified rabbit serum by affinity purification via sequential chromatography on phospho- and non-phospho-peptide affinity columns.

Specificity: Phospho-NT5C (Ser184) Ab detects endogenous levels of NT5C only when phosphorylated at Ser184

Immunogen: A synthesized peptide derived from human NT5C around the phosphorylation site of Ser184

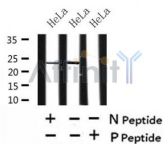
Uniprot: Q8TCD5

Subcellular Location: Cytoplasm.

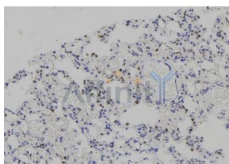
Tissue Specificity: Detected in skeletal muscle, heart and pancreas.

Similarity: Belongs to the 5'(3')-deoxyribonucleotidase family.

Storage Condition and Buffer: Rabbit IgG in phosphate buffered saline , pH 7.4, 150mM NaCl, 0.02% sodium azide and 50% glycerol.Store at -20 °C.Stable for 12 months from date of receipt



Western blot analysis of Phospho-NT5C (Ser184) in lysates of HeLa, using Phospho-NT5C (Ser184) Ab(AF7422).



AF7422 at 1/100 staining rat lung tissue sections by IHC-P. The tissue was formaldehyde fixed and a heat mediated antigen retrieval step in citrate buffer was performed. The tissue was then blocked and incubated with the Ab for 1.5 hours at 22°C. An HRP conjugated goat anti-rabbit Ab was used as the secondary.

IMPORTANT: For western blot, incubate membrane with diluted Ab in 5% w/v milk, 1X TBS, 0.1% Tween@20 at 4°C with gentle shaking, overnight.

For Research Use Only. Not for use in diagnostic and therapeutic procedures. Not for resale without express authorization.