

## Phospho-CDC20 (Thr70) Ab

Cat.#: AF7446	Concn.: 1mg/ml	Mol.Wt.: 50KD
Size: 50ul,100ul,200ul	Source: Rabbit	Clonality: Polyclonal

**Application:** WB 1:500-1:2000

**Reactivity:** Human,Mouse,Rat

**Purification:** The Ab is from purified rabbit serum by affinity purification via sequential chromatography on phospho- and non-phospho-peptide affinity columns.

**Specificity:** Phospho-CDC20 (Thr70) Ab detects endogenous levels of CDC20 only when phosphorylated at Thr70

**Immunogen:** A synthesized peptide derived from human CDC20 around the phosphorylation site of Thr70

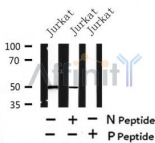
**Uniprot:** Q12834

**Subcellular Location:** Cytoskeleton;

**Tissue Specificity:** Synthesis is initiated at G1/S, protein level peaks in M phase and protein is abruptly degraded at M/G1 transition.

**Similarity:** Belongs to the WD repeat CDC20/Fizzy family.

**Storage Condition and Buffer:** Rabbit IgG in phosphate buffered saline , pH 7.4, 150mM NaCl, 0.02% sodium azide and 50% glycerol.Store at -20 °C.Stable for 12 months from date of receipt



Western blot analysis of Phospho-CDC20 (Thr70) in lysates of Jurkat , using Phospho-CDC20 (Thr70) Ab(AF7446).

**IMPORTANT:** For western blot, incubate membrane with diluted Ab in 5% w/v milk , 1X TBS, 0.1% Tween@20 at 4°C with gentle shaking, overnight.

For Research Use Only. Not for use in diagnostic and therapeutic procedures. Not for resale without express authorization.