

Phospho-Nephrin(Ser432) Ab

Cat.#: AF7452	Concn.: 1mg/ml	Mol.Wt.: 85kDa
Size: 50ul,100ul,200ul	Source: Rabbit	Clonality: Polyclonal

Application: WB 1:500-1:2000, IHC 1:50-1:200

Reactivity: Human,Mouse

Purification: The Ab is from purified rabbit serum by affinity purification via sequential chromatography on phospho- and non-phospho-peptide affinity columns.

Specificity: Phospho-Nephrin(Ser432) Ab detects endogenous levels of Nephrin only when phosphorylated at Ser432

Immunogen: A synthesized peptide derived from human Nephrin around the phosphorylation site of Ser432

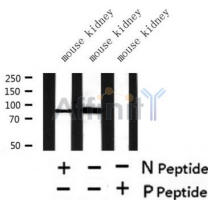
Uniprot: O60500

Subcellular Location: Cell membrane. Predominantly located at podocyte slit diaphragm between podocyte foot processes. Also associated with podocyte apical plasma membrane.

Tissue Specificity: Specifically expressed in podocytes of kidney glomeruli.

Similarity: Belongs to the immunoglobulin superfamily.

Storage Condition and Buffer: Rabbit IgG in phosphate buffered saline , pH 7.4, 150mM NaCl, 0.02% sodium azide and 50% glycerol.Store at -20 °C.Stable for 12 months from date of receipt



Western blot analysis of extracts of mouse kidney tissue sample,using Phospho-Nephrin(Ser432) Ab .

IMPORTANT: For western blot, incubate membrane with diluted Ab in 5% w/v milk , 1X TBS, 0.1% Tween@20 at 4°C with gentle shaking, overnight.

For Research Use Only. Not for use in diagnostic and therapeutic procedures. Not for resale without express authorization.