

## HER2 (Phospho-Thr686) Ab

Cat.#: AF8048  
 Size: 50ul,100ul,200ul

Concn.: 1mg/ml  
 Source: Rabbit

Mol.Wt.: 185kDa  
 Clonality: Polyclonal

**Application:** WB 1:1000-3000, IHC 1:50-1:200, IF/ICC 1:100-1:500

**Reactivity:** Human,Mouse,Rat

**Purification:** The Ab is from purified rabbit serum by affinity purification via sequential chromatography on phospho- and non-phospho-peptide affinity columns.

**Specificity:** HER2 (Phospho-Thr686) Ab detects endogenous levels of HER2 only when phosphorylated at Thr686

**Immunogen:** A synthesized peptide derived from human HER2 (Phospho-Thr686)

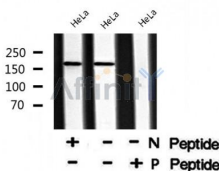
**Uniprot:** P04626

**Subcellular Location:** Cytoplasm. Nucleus and Cell membrane. Cytoplasm, perinuclear region. Nucleus. Translocation to the nucleus requires endocytosis, probably endosomal sorting and is mediated by importin beta-1/KPNB1.

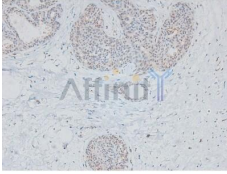
**Tissue Specificity:** Expressed in a variety of tumor tissues including primary breast tumors and tumors from small bowel, esophagus, kidney and mouth.

**Similarity:** Belongs to the protein kinase superfamily. Tyr protein kinase family. EGF receptor subfamily.

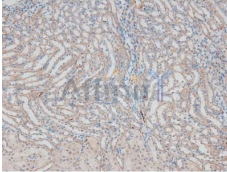
**Storage Condition and Buffer:** Rabbit IgG in phosphate buffered saline , pH 7.4, 150mM NaCl, 0.02% sodium azide and 50% glycerol.Store at -20 °C.Stable for 12 months from date of receipt



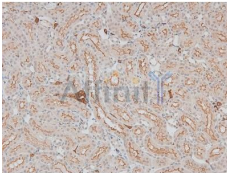
Western blot analysis HER2 (Phospho-Thr686) using HeLa whole cell lysates



AF8048 at 1/200 staining Human breast tissue sections by IHC-P. The tissue was formaldehyde fixed and a heat mediated antigen retrieval step in citrate buffer was performed. The tissue was then blocked and incubated with the Ab for 1.5 hours at 22°C. An HRP conjugated goat anti-rabbit Ab was used as the secondary.



AF8048 at 1/200 staining Mouse kidney tissue sections by IHC-P. The tissue was formaldehyde fixed and a heat mediated antigen retrieval step in citrate buffer was performed. The tissue was then blocked and incubated with the Ab for 1.5 hours at 22°C. An HRP conjugated goat anti-rabbit Ab was used as the secondary.



AF8048 at 1/200 staining Rat kidney tissue sections by IHC-P. The tissue was formaldehyde fixed and a heat mediated antigen retrieval step in citrate buffer was performed. The tissue was then blocked and incubated with the Ab for 1.5 hours at 22°C. An HRP conjugated goat anti-rabbit Ab was used as the secondary.



AF8048 staining MDA-MB-231 by IF/ICC. The sample were fixed with PFA and permeabilized in 0.1% Triton X-100, then blocked in 10% serum for 45 minutes at 25°C. The primary Ab was diluted at 1/200 and incubated with the sample for 1 hour at 37°C. An Alexa Fluor 594 conjugated goat anti-rabbit IgG (H+L) Ab, diluted at 1/600, was used as the secondary Ab.

**IMPORTANT:** For western blot, incubate membrane with diluted Ab in 5% w/v milk , 1X TBS, 0.1% Tween@20 at 4°C with gentle shaking, overnight.

For Research Use Only. Not for use in diagnostic and therapeutic procedures. Not for resale without express authorization.