

## IL-1R $\alpha$ /CD121 $\alpha$ (Phospho-Tyr496) Ab

Cat.#: AF8069	Concn.: 1mg/ml	Mol.Wt.: 65kDa
Size: 50ul,100ul,200ul	Source: Rabbit	Clonality: Polyclonal

**Application:** WB 1:1000-3000

**Reactivity:** Mouse,Rat,Human

**Purification:** The Ab is from purified rabbit serum by affinity purification via sequential chromatography on phospho- and non-phospho-peptide affinity columns.

**Specificity:** IL-1R $\alpha$ /CD121 $\alpha$  (Phospho-Tyr496) Ab detects endogenous levels of IL-1R $\alpha$ /CD121 $\alpha$  only when phosphorylated at Tyr496

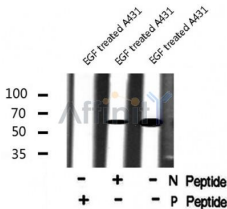
**Immunogen:** A synthesized peptide derived from human IL-1R $\alpha$ /CD121 $\alpha$  (Phospho-Tyr496)

**Uniprot:** P14778

**Subcellular Location:** Membrane.

**Similarity:** Belongs to the interleukin-1 receptor family.

**Storage Condition and Buffer:** Rabbit IgG in phosphate buffered saline , pH 7.4, 150mM NaCl, 0.02% sodium azide and 50% glycerol.Store at -20 °C.Stable for 12 months from date of receipt



Western blot analysis IL-1R $\alpha$ /CD121 $\alpha$  (Phospho-Tyr496) using EGF treated A431 whole cell lysates

**IMPORTANT:** For western blot, incubate membrane with diluted Ab in 5% w/v milk , 1X TBS, 0.1% Tween@20 at 4°C with gentle shaking, overnight.

For Research Use Only. Not for use in diagnostic and therapeutic procedures. Not for resale without express authorization.